

The Community Magazine for  
Burham, Wouldham & Peters Village



April 2022

*Published by  
the Church of England Parish of Burham & Wouldham.  
Produced and delivered by local volunteers.*

**THE CHURCH OF ENGLAND PARISH OF BURHAM & WOULDHAM**

**All Saints Church, Wouldham Rector: Rev'd Mike Hayes**

**Tel: 07964 697556**

**Email: [Mikejhayes@hotmail.co.uk](mailto:Mikejhayes@hotmail.co.uk)**

*Usual working days are Sundays, Tuesdays, & Fridays.*



Position	Persons	Contact details
Church Wardens	Mr Tim Reed Mr Ken Kirk	01634 666895 07818 361608
Curate	Rev. Chris Winter	<a href="mailto:chriswinter612@gmail.com">chriswinter612@gmail.com</a>
Organist & Choirmaster	Douglas Henn-Macrae	01634 683096 <a href="mailto:douglas@gundulf.org.uk">douglas@gundulf.org.uk</a>
Baptisms & church Secretary	Mrs Gwen Worcester	01634 672060
Monuments & churchyard, and wedding enquiries	Rev'd Mike Hayes	07964 697556 <a href="mailto:Mikejhayes@hotmail.co.uk">Mikejhayes@hotmail.co.uk</a>
Church Safeguarding officer	Mrs Helen Wells	Tel. 01634 685935 <a href="mailto:hwells2@btinternet.com">hwells2@btinternet.com</a>
Bell ringing	Miss Tina Miles	07967 795913
Church Treasurer	Mrs Nicky Grimes	01634 864319
Magazine Editor	Miss Pamla Walker	07988 645801 <a href="mailto:editorwbpvmagazine@gmail.com">editorwbpvmagazine@gmail.com</a>

View the magazine online at:

Church website: [www.wouldhamchurch.org.uk](http://www.wouldhamchurch.org.uk)

Wouldham Parish Council: [www.wouldhampc.com](http://www.wouldhampc.com)

Burham Parish Council: [www.burhampc.kentparishes.gov.uk](http://www.burhampc.kentparishes.gov.uk)

If you would like to receive **The Diocese of Rochester Newsletter**, go to the link here for the **E-Newsletter**:

**<https://www.rochester.anglican.org/communications/diocesan-publications/enewsletter/>**

Hello and welcome to the April 2022 edition of the magazine.

Spring is upon us and I hope you enjoy the emerging nature all around us as much as I do. April brings Easter and there are lots of activities to look forward to so grab a cuppa and relax as you browse this edition and perhaps arrange to take part in the wonderful events happening around us such as Baton twirling and Bowls. If you have any events lined up please let me know and I will endeavour to add them in future issues.

With my very best wishes,  
Pamla Dawn Walker, Editor  
editorwbpvmagazine@gmail.com

---

## **Burham and Wouldham Women's Institute**

The women's Institute is what the members make it so each group of WI members can have slightly different priorities or interests. Here at Burham and Wouldham WI we discuss the major issues of the day, try to act in a green way and raise funds for women's charities.

We also have FUN at the same time.

Did you see all our knitted poppies last November? Members and others in the wider community knitted red poppies that were displayed at the entrance to each village, Burham, Wouldham, Peters Village and Kits Coty. Our knitting needles are not idle. Now we are busy making bunting to help celebrate the Queen's Platinum Jubilee. Where possible we are reusing oddments of wool; red, white, and blue of course. One member has even unpicked an old jumper to ensure we reuse and recycle. Everybody is welcome to make a pennant, ask a WI member for the pattern and our strings of bunting will grow and grow.

Another Nationwide WI project to celebrate the Jubilee is "Where's Winnie?" This countrywide competition is designed to bring a little cheer into all areas of the country as well as keeping our brains and fingers busy. Intrigued? Then read next month's instalment to learn where you might find Winnie the knitted Corgi.

Meet us on the 19th of April at 7.30pm in Burham Village Hall;  
Speaker Simon Ginnaw will be talking about the Wildlife of Mote Park.

See you there.  
Heather Brown

Secretary Burham & Wouldham WI

# CHURCH OF ENGLAND

Every Sunday\* at All Saints Church, Wouldham

\*Except Sunday the 10th of April when we will be at Burham Old Church (St. Mary's).

Morning prayer at 9:15 am and Sung Eucharist at 10:30am

All are welcome to attend in person.

Services will also be on Zoom; email Mike for the link.



Sunday 3rd April	Fifth Sunday of Lent	10:30am
Sunday 10th April	Palm Sunday	10:30am
Mon-Wed 11th to 13th April	Compline (Night Prayer)	9:00pm
Thursday 14th April	Maundy Thursday Service	7:30pm
Friday 15th April	Good Friday Messy Church at Burham Old Church	10:30am
Friday 15th April	Good Friday Service at All Saints	3:00pm
Sunday 17th April	Easter Day Vigil at All Saints	5:30am
Sunday 17th April	Sung Eucharist	10:30am
Sunday 24th April	Second Sunday of Easter	10:30am
Every Tuesday (except the 12th)	Said Eucharist	7:30pm

**Intergenerational Worship** every 3<sup>rd</sup> Sunday at 4pm at Wouldham School. This month on the 17th of April 2022.

**Toddler Church** at All Saints Church. Every Friday in term-time between 9.15-10.15am for babies, toddlers, parents, and carers. Come and enjoy: Tea, conversation, play, story, song, and prayer.

**Candle Prayer Time** The prayer group continues to pray at 7.30pm every Wednesday. All welcome to send in prayer requests to Gwen on: 01634 672060 or [gwenworcester@hotmail.com](mailto:gwenworcester@hotmail.com)

## Music in Church:

Choir Practice is normally held on Thursdays at 7.30pm. To apply to join the choir, or to find out more, please contact Douglas Henn-Macrae

[www.wouldhamchurch.org.uk](http://www.wouldhamchurch.org.uk)

Dear Friends,

As I write the war in Ukraine has been going on for two weeks. Though of course the Russian-backed separatists in the east have been fighting for many years already.

There is evidence of deliberate targeting of civilians. The Russian military have been sacrificed by their leader and put in a situation where they cannot win.

It's impossible to say what will have happened by the time you read this.

I pray fervently that peace will come and admire the bravery and self-sacrifice of Ukrainians. I pray that there will be an effective and united response from all countries of the world against Putin's brutal and repressive regime. We have been cosying up to him for too long and become complicit.

There is a good response to appeals for humanitarian aid, which is something to be thankful for and this will be needed for a long time. We will also need to be speedier and more generous in our support of refugees.

In this time of great tension and anxiety we can be gentle with each other and kind. We may also feel a sense of helplessness at the tragedy which we see unfolding.

This particular war touches us more deeply because it's in Europe. In fact many other terrible wars continue in many parts of the world, and people everywhere need peace and justice.

We are in the middle of the season of Lent a time when Christians go deeper into prayer and reflection and try to live more simply, recalling Jesus' 40 days in the wilderness. We examine our own part in the unjust structures of the world which lead to wars and pledge ourselves to work for justice and peace in whatever ways we can.

In peace,

Mike

## YOUR HEALTHY FEET

Foot Health Practitioners  
Mobile Foot Health Professional  
Service in the comfort of your own home



### PRICES

£40 first appointment.  
£37 follow up.  
£35 over 65 first  
appointment.  
£32 over 65 follow up.

### TREATMENTS

Corns & calluses.	Thickened fungal nails.
Hard skin.	Cracked heels.
Verrucas.	Toe nail cutting and care.
Ingrown toe nails.	Diabetic and High Risk Foot Care and Advice.

Mobile: 07500 041535

Email: [sarah@yourhealthyfeet.co.uk](mailto:sarah@yourhealthyfeet.co.uk)

Web: [www.yourhealthyfeet.co.uk](http://www.yourhealthyfeet.co.uk)

## Tonbridge and Malling Ramblers– April walks 2022



Non-members are welcome.

To find the dates, locations, and start times for our walks, see: [www.tonbridgeandmallingeramblers.org.uk](http://www.tonbridgeandmallingeramblers.org.uk).

Or email: [info@tonbridgeandmallingeramblers.org.uk](mailto:info@tonbridgeandmallingeramblers.org.uk).

Sunday 3rd April	Leisurely circular walk from East Peckham across farmland to Golden Green.	5.5 miles
Wednesday 6th April	Moderate circular walk from Horsmondon and across streams; one long uphill stretch.	5.5 miles
Sunday 10th April	A moderate circular walk from Five Oak Green to Spring Grove through hop fields, orchards, and woods.	5 miles
Wednesday 13th April	A moderate circular walk from Lullington Park to Shoreham along the River Darrent.	6 miles
Sunday 17th April	A moderate circular walk from Otford to Shoreham. One step climb at the start	5 miles
Wednesday 20th April	A moderate circular walk from Kemsing through the St Clere estate and up a steep slope to the Pilgrim's Way for great view. May be slippery if wet; bring walking poles if you need them.	5 miles
Sunday 24th April	Moderate circular walk from St. Mary's Platt to Basted, Ightham Mote, Claygate Cross & Crouch.	5 miles



# Looking to move?

01622 717500

For a **FREE** valuation please give us a call  
[bluebell-estates.co.uk](http://bluebell-estates.co.uk)

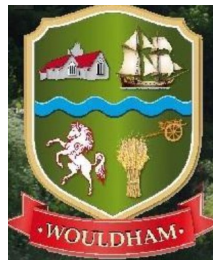


## WOULDHAM PARISH COUNCIL

Our last meeting was on the 1st of March 2022.  
Our next meeting will be on Tuesday the 5th of April  
in the Village Hall, commencing at 7:30pm.

Agenda and details can be found on the website.

Keep up to date by visiting: [www.wouldhampc.com](http://www.wouldhampc.com)  
or via Facebook: Wouldham Parish Council.



### **155 Bus Service**

At the time of writing this, we have just heard about the 155 service being withdrawn in April. We have received the following response from KCC. Hopefully, by the time you read this, there will be some positive news and we will keep you updated via Facebook and our website.

*'Arriva have given notice to the Traffic Commissioner that they will be withdrawing the commercial 155 (i.e. the core daytime Monday to Saturday service) from 17<sup>th</sup> April 2022. This includes all elements of the route other than the Chatham to Borstal leg.*

**Evening** journeys (operated by Nu-Venture) and the Sunday service are services provided under contract to KCC and are therefore separate from Arriva's decision.

*As a commercial service, the core 155 withdrawal is not subject to KCC consultation. Instead, its operation and status is a decision for the operator i.e., Arriva.*

**Separately**, KCC is consulting on £2.2m of bus withdrawals to address its own budget pressures. The contracted evening journeys and Sunday service referenced above do not form part of the list of services proposed for withdrawal as part of this exercise and as such are not part of the consultation document recently published.

**KCC** (working with Cllr Andrew Kennedy) is currently in discussion with Trenport with respect to the S106 monies available from the Peters Village development. As you know, this funding was premised on building on the 155, so agreement is required from Trenport if its use is to be varied. We are seeking agreement from Trenport to utilise the funding to provide a new service which meets the requirements of the S106 but, which also covers elements of the 155 service being withdrawn by Arriva. As things stand currently there is no agreement but discussions are continuing'.

**KCC** will need to consider the status of the evening and Sunday services given the situation with the core service on which they currently build, but the nature of this is subject to the outcome of the Trenport discussions.

*Continued ...*



*Continued ...*

## **Crime**

Petty crime across the area is still an issue. However, continued efforts of people reporting incidents is starting to have an impact and the situation is being recognised across local agencies. Any crimes should be reported via:

101, <https://www.kent.police.uk/ro/report/ocr/af/how-to-report-a-crime> or 999 in an emergency. In order to get maximum support from local authorities, please ensure you report anything and get a crime reference number.

Recently there have been a number of vehicles seized using Section 59 of the Police Reform Act. Vehicles can be seized if being used in a way that causes alarm, harassment or distress; being driven by someone who does not have a proper licence or insurance; dangerously, illegally or obstructively parked or abandoned. This includes off-road bikes, e-scooters and any mechanically propelled vehicle.

A good source of information for crime related issues is:

[www.e-watch.co](http://www.e-watch.co) where there is a wealth of information from the Police, Fire & Rescue, Kent Fraud Team, and Which (on consumer issues).

## **Fly tipping**

Fly tipping continues to be an issue, so it is important for everyone to report it whenever they come across it.

You can report directly to:

<https://www.tmbc.gov.uk/bins-waste/report-fly-tipping>.

## **Roads/Footpaths/Grounds Maintenance**

As a reminder, potholes etc can be reported directly to KCC through their website:

<https://www.kent.gov.uk/roads-and-travel/what-we-look-after/roads/potholes>

Water leaks can also be reported to: [www.southeastwater.co.uk](http://www.southeastwater.co.uk)

*Continued ...*

*Continued ...*



**Platinum Jubilee Celebration**  
**Save the dates 2-5<sup>th</sup> June, 2022**



So far, we have confirmed:

- \* 2<sup>nd</sup> of June: Beacon Lighting and get together at Nelson Road Green, by the river. (a second one has been added; in Peters Village (details to follow).
- \* 3<sup>rd</sup> and 4<sup>th</sup> of June: Wouldham Photo Exhibition, Village Hall.
- \* 5<sup>th</sup> of June: Big community picnic, on the recreation ground.

More events are yet to be confirmed, so watch this space.

**Coffee mornings**

The 1st and 3rd Friday of each month between 10:00am and 12 noon in the Village Hall.

**Defibrillators**

Currently the defibrillators in the village are out of action. The nearest one is now at McDonalds. We hope to have the equipment available shortly with a new one in Peters Village.

**And finally...**

This month's special **THANK YOU** mentions go to:  
Mr Howes for clearing the Tramway after Storm Eunice, Eddie Bell and everyone who sent me photo's/messages of damage around the Parish, and Anne Marr for all her work revitalising the Village Hall.

If you think anyone else needs recognition for good work, please let me know. If you have any suggestions, comments, or would like to get involved, please contact me:

Tina Miles

Email: [clerk@wouldhampc.co.uk](mailto:clerk@wouldhampc.co.uk)  
Tel. No. 07904 281522

*When did you start this role?*

In 1997 when I was just 16, doing work experience for college.

*What qualifications do you need to perform this role?*

Formal qualifications aren't a legal requirement but City and Guilds is the most widely recognised version.

*What attracted you to this position?*

I desperately wanted to work with dogs, but further work experience showed me I didn't have the stomach for the veterinary profession.

*What is your favourite part of the job?*

My favourite part is my daily interaction with several varieties of dogs, but I also enjoy the human connection with people just as devoted to dogs as I am.

*And the least?*

My least favourite part, sadly, is seeing the suffering that can be caused by negligence, even so much as an over grown nail can cause a dog a great deal of discomfort, and the maintenance of their hair coat is vitally important to their wellbeing, it's very much not just cosmetic.

*What is a typical day like for you?*

A typical day for me means a full groom of 3-4 dogs depending on their size, all maintenance trims as the vast majority of my clients rebook for this roughly every 6-7 weeks.

*What advice would you give to someone thinking of training to be a dog groomer?*

Spend some time with a busy established groomer, it can be hard work and very physically demanding. You need to see what we deal with on a daily basis before you decide to spend potentially a large amount of money of your education and equipment.

*Can you share the funniest, embarrassing or most memorable story?*

It's hard to choose a memorable story, these dogs are as individual to me as people, but I currently have a little rescue dog on my books, who came to me to be completely clipped off after being saved by his new owner.

*Continued ...*

*Continued ...*

He clearly had some sort of injury to his nose. I completed most of the removal of his matted hair, but he wouldn't let me anywhere near his face with a clipper or scissors; he was in quite a state and the hair desperately needed removing, I sang to him, offered him treats, had my assistant dancing in the background to try to take his mind off it; he cried, I cried!

Eventually I managed it and he went home functional but it wasn't my best work. Now after years of grooming he falls asleep having his face trimmed showing total trust in me and he is very special to me for this reason.

*How would you rate job satisfaction out of 10?*

10/10. I have mild OCD so this job is perfect for me!

On Tuesday the 29th of April All Saints Coffee Morning for April will be between 10.45am and 12.00 noon.



Coffee mornings on  
the 1st and 3rd Friday of each month

We hope you can pop along to support us and:  
Share memories for the Wouldham Platinum Jubilee memory book,  
Meet your neighbours and friends for a natter and a cuppa,  
Find out future plans for the hall and  
Bring along donations



Enquiries to: [clerk@wouldhampc.co.uk](mailto:clerk@wouldhampc.co.uk)





**ANY TIME. ANYWHERE. ANY OCCASION.**  
AIRPORT TRANSFERS, WEDDINGS, PARTIES & CORPORATE EVENTS

## 2022 HOLIDAYS

### Beautiful Bath

Friday 1<sup>st</sup> April  
2 nights bed & breakfast at a 4-star hotel, with plenty of leisure time to explore Bath.  
£289

### Isle of Man

Tuesday 12<sup>th</sup> April  
5 nights half board with 2 railway journeys, a day at leisure at a guided tour.  
£579

### Jacobite Steam & Cruise

Sunday 17<sup>th</sup> April  
6 nights half board with journey on the Jacobite Steam Train, cruise on Loch Ness and more.  
£899

### Winchester & Gln Weekend

Friday 29<sup>th</sup> April  
2 nights half board, with guided tour of Bombay Sapphire Distillery  
£239

### Lake District

Thursday 5<sup>th</sup> May  
5 nights half board with two train journeys and a cruise along Lake Windermere  
£499

### Pretty Palngton: The English Riviera

Tuesday 10<sup>th</sup> May  
4 nights half board, entertainment every evening. Steam & Cruise journey. Excursions to Brixham & Torquay.  
£419

### Splendid Snowdonia

Monday 16<sup>th</sup> May  
4 nights half board. Visit Bodnant foods. Circular journey on the Llanberis Lake railway. Return journey to the Snowdon Mountain Railway. Visit to Betws-y-Coed.  
£499

### Bournemouth

Monday 23<sup>rd</sup> May  
4 nights half board. Excursion to Poole. Optional excursion to Dorchester & Weymouth  
from £389

ALL TOURS & ITINERARIES CAN BE FOUND ON OUR WEBSITE:

[www.farleighcoaches.com](http://www.farleighcoaches.com)

For more information, to book, or to request a free brochure, contact us:

CALL: **01634 254000** or  
EMAIL: [info@farleighcoaches.com](mailto:info@farleighcoaches.com)

Pop into our travel office on Vicarage Lane, Hoo, ME3 9LB.

## 2022 DAY EXCURSIONS

### The View from the Shard & Afternoon Tea

Saturday 19<sup>th</sup> March  
£83

### Ely on Market Day

Thursday 24<sup>th</sup> March  
£33

### Mamma Mia the Musical

Friday 25<sup>th</sup> March  
£87  
*Evening performance with seats in the stalls*

### Afternoon Tea on the Thames

Sunday 27<sup>th</sup> March  
Wednesday 11<sup>th</sup> May  
£84

### Colchester Zoo

Thursday 7<sup>th</sup> April  
£49 Adult, £43 Child

### Cadbury World

Monday 11<sup>th</sup> April  
Adult: £54.00  
Child: £50.00

### Windsor Cream Tea Cruise

Thursday 28<sup>th</sup> April - £63

### Garden Centre Explorer

Tuesday 3<sup>rd</sup> May  
£22

### Henley on Thames

Wednesday 4<sup>th</sup> May  
£31

### PICK UPS:

AT HOO, WAINSCOTT, STROOD, ROCHESTER, CHATHAM, GILLINGHAM, RAINHAM - CAN ACCOMMODATE BURHAM, WOULDHAM AND PETERS VILLAGE ON REQUEST.

### Tea on the Thames

Wednesday 11<sup>th</sup> May  
£84.00

### Emirates Cable car/ Greenwich

Saturday 14<sup>th</sup> May  
£41.00

### Alpaca Experience with Afternoon Tea

Saturday 21<sup>st</sup> May  
£57

### Harry Potter World

Sunday 22<sup>nd</sup> May  
Adult £78, Child, £70

### Kew Gardens

Tuesday 14<sup>th</sup> June  
£47

### Battle of Britain Air Show

Saturday 25<sup>th</sup> June  
£45

### Kennet & Avon Horse Drawn Cream Tea Cruise

Tuesday 28<sup>th</sup> June  
£82

### Windsor & Bekonscot Model Village

Wednesday 13<sup>th</sup> July  
£89

### RHS Wisley

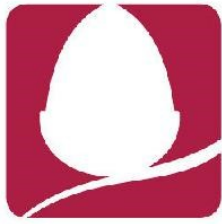
Thursday 14<sup>th</sup> July  
£41

### Southend

Saturday 16<sup>th</sup> July  
£29

### Brighton

Sunday 31<sup>st</sup> July



# ACORN STAIRLIFTS

ACCREDITED PARTNER

## NEXT DAY STAIRLIFTS



LIFTS MADE IN THE UK ~ 24/7 EMERGENCY COVER

LOCAL KENT SURVEYOR

FOR A FREE BROCHURE PLEASE CALL

**0800 016 9276**

[www.nextdaystairlifts.com](http://www.nextdaystairlifts.com)

## **Burham Parish Council news April 2022**



Keep up to date with Parish Council business by  
Visiting the following platforms:

Website: [www.burhampc.kentparishes.gov.uk](http://www.burhampc.kentparishes.gov.uk)

Facebook page: **Burham Parish Council**

**The last meeting was the 28th of March 2022; next meeting is scheduled for the 25th of April 2022** (Normally the last Monday of the month excluding Bank Holidays).

### **Parking**

Whether you are using one of the car parks provided by the Parish Council or parking on the highway, please ensure that you are parking “pretty” and considerate to others. Please do not use more than one space if parking spaces are marked. Failure to comply within the free of charge facilities provided by the Parish Council, may result in some vehicles being prohibited.

Also, please do not block driveways, entrances or park on double yellow lines or near to corners. Inconsiderate parking in the village especially in some areas can cause major problems for other vehicles, particularly service/emergency vehicles. A little consideration to your neighbours and other vehicle users, can go a long way.

### **Litter Pick**

Saturday the 30th of April at 10.00am in the Village Hall car park. If you are interested in being involved, please let me know, so that we can estimate what equipment we need from TMBC. All welcome.

### **155 Arriva**

Cllr Andrew Kennedy is working very hard behind the scenes to try and save the 155 and will keep residents informed when there is an outcome.

### **War Memorial**

Work is continuing behind the scenes to have the crack in the war memorial addressed and somehow add the additional names that was found after the two new plaques was ordered. Grants for the work may be available.

*Continued ...*



*Continued ...*

### **Anti-social behaviour**

Any anti-social behaviour must be logged with the Police, either on 101 or via the Kent Police website.

**Queens Platinum Celebrations** We are planning an event on the recreation ground “Picnic in the Park”, with various entertainment, food vans, etc. for those not wishing to pack up a picnic. Further details to follow. Keep an eye on the noticeboards and website for updates.

### **Speeding**

The Police have asked us to remind residents to report on 101 or via their website any speeding vehicles along New Court Rd, when the incident is occurring if possible. Sundays seem to be a preferred day and night. As reporting will help get a response from the Police if they are available and also evidence the need for cameras on the road.

### **Equestrian usage New Court Rd Footway/cycleway**

Please be advised that we now have written confirmation from the KCC Cabinet Member that New Court Rd Footway/cycleway is not formally designated for horses. Therefore, all other users should be aware that public liability insurance held by the equestrians would not be valid in the event of an accident/incident.

### **Defibrillator**

As a reminder, there is a defibrillator on the outside of the Parish Building.

### **Anti-social behaviour**

Any Anti-social behaviour must be logged with the Police, either on 101 or via the Kent Police website.

If you have any items that you would like the Parish Council to discuss just give me a call or email me or join in at the next scheduled meeting, which is due on the 25th of April 2022.

Pam Saunders, Clerk  
01634 685936

email: [pam@burhampc.co.uk](mailto:pam@burhampc.co.uk)

## Aylesford Farmer's Market

Fresh local produce from farm to kitchen



3<sup>rd</sup> Sunday of every month 9.30am - 1.30pm

- \* Seasonal fruit
- \* Fresh vegetables
- \* Local wines and cheeses
- \* Artisan breads and cakes
- \* Hand reared meat/fresh fish
- \* Talented crafters and much more ...

The next market will be on:

Sunday the 17th of April 2022 at

Aylesford Priory, Aylesford, ME20 7BX



A donation box can be found in the car park to help support The Priory.

*Feeling stressed? Is your Mental Health suffering?*

### **MONTHLY MEDITATION GROUP ON ZOOM - ALL WELCOME**

3<sup>rd</sup> Tuesday of the month. Next one on Tuesday 19th April  
Sign in at 8.15pm (start 8.30pm) for 1 hour

£20 for a block of 6 sessions (Normally £5 per session)  
A percentage of your money will go to MIND Mid Kent  
(Mental Health charity)

This is something you can do in the comfort of your own home  
to positively change your mental wellbeing.

*Make time for yourself to Relax and Let Go*

**Contact Nadia on 07711 813 318 for more information**

## Visiting household waste recycling centres during the covid-19 pandemic

Our household waste and recycling centres (HWRCs) at: **Capstone, Hoath Way, Cuxton Site (Medway Council) & Tovil (Kent County Council)**. Following a public consultation held last year, and a debate at the Environment and Transport Cabinet Committee, the Cabinet Member for Environment has taken the decision to keep the booking system on a permanent basis.

To be able to visit a HWRC you **must book a slot online in advance**. visit:

[Visiting a Household Waste Recycling Centre during coronavirus - Kent County Council](#)

### QUALIFIED FEMALE PLUMBER

Specialising in  
small  
maintenance &  
repairs



For a professional, friendly and  
reliable service

**CALL RACHEL: 07731 756947**  
**[www.haslerplumbing.co.uk](http://www.haslerplumbing.co.uk)**

### Boxley Timber & Fencing Supplies



Quality Sheds & Summerhouses.

Sleepers & Decking.

Gates & Trellis made to size.

All types of Fencing.

Collection & Delivery.

Stockist of tools:

DeWalt, Bahco, Ryobi & Quality Faithfull Tools

A family run business offering friendly professional advice at

Boxley Sawmill,

Pilgrims Way,

Boxley, Maidstone,

ME14 3EB

Tel. No. 01622 753953



## THE HENRY PETERS CHARITY

This charity was set up by Henry Peters in his will around 1912 to be distributed to the sick and poor of Wouldham by the Parish Council.

The trustees have agreed that the payments could be used to fund residents getting to and from the doctors' surgery or hospital.

To apply please contact Nicky Grimes on 01634 864319

## Parish information

BURHAM PARISH COUNCIL: Mon-Friday, 10am - 2pm

Pam Saunders, Clerk: Tel: 01634 685936.

Email: [pam@burhampc.co.uk](mailto:pam@burhampc.co.uk) [www.burhampc.kentparishes.gov.uk](http://www.burhampc.kentparishes.gov.uk).

The Parish Office, Rochester Road, Burham. ME1 3RJ

Meetings usually held on the last Monday in the month.

Next Council meeting: Monday the 25th of April 2022 .

---

WOULDHAM PARISH COUNCIL:

Tina Miles, Clerk, Tel. No. 07904281522

Email: [clerk@wouldhampc.co.uk](mailto:clerk@wouldhampc.co.uk)

[www.wouldhampc.com](http://www.wouldhampc.com)

Our next meeting is on Tuesday the 5th of April 2022 . For details about how to join please see the agenda published on [wouldhampc.com](http://wouldhampc.com)

---

COMMUNITY WARDEN:

Vivien Hickmott 07813694140

Police:

PCSO Samir Patangwa.

Non emergency Tel. No.: 101

TRANSPORT:

Bus Services: Arriva No. 155.

Clarks of London's commuter coach service:

[www.clarkescommute.co.uk](http://www.clarkescommute.co.uk)

The 764a and 764b service picks up from bus stops:

Keepers Cottage Lane (05:52 & 06:30) &

Village Road (05:50 and 06:28). or call: 020 8778 6697.

---

ALLOTMENTS: To enquire about the availability of allotments, contact:

Burham: Dave Young 01634 867669.

Wouldham: Sue Durrani 01634 682363

**PETERS  
VILLAGE**



Contact Steve at:

[Petersvillagenhw@gmail.com](mailto:Petersvillagenhw@gmail.com)



**Phoenix Medical Practice**  
**33 Bell Lane, Burham, ME1 3SX. Tel: 01634 867982.**

**www.phoenixsurgery-burham.nhs.uk**



<b>Surgery opening times</b>	<b>Opens</b>	<b>Closes</b>
Monday & Thursday	8:30 am	5:00pm
Tuesday, Wednesday & Friday	8:30am	6:00pm
<b>Dispensary opening times</b>	<b>Opens</b>	<b>Closes</b>
Monday & Thursday	8:45am	12:00 noon
	2:00pm	4:45pm
Tuesday, Wednesday & Friday	8:45am	12:00 noon
	2:00pm	6:15pm

**NHS111:** If you require urgent medical help ring 111 or visit 111.nhs.uk

**Defibrillators** are situated outside: Burham Parish Office  
 Wouldham Village Hall  
 Opposite the village sign on Wouldham High Street

**If a machine is needed call 999 for the code and instructions**

**Prescriptions** can be arranged to be collected, thanks to a service offered by the church. The surgery requires 4 days notice to prepare them and 24 hours notice is required for volunteers to collect them. Contact Rachel Harris (who will be available to deliver medicines on Tuesdays and Thursdays) on 07725 289194 for more details.

**Hearing aids** availability and maintenance from <https://hikent.org.uk> are looking for volunteers to help with the aftercare clinics they normally hold on the 2nd Thursday of the month at Burham Community Centre. Ring 01622 691151 for more information and updates of when the free of charge drop-ins will resume.

## Churches:

### Church of England Parish of Burham & Wouldham:

- \* **All Saints, High Street, Wouldham.**

Holy Communion at 10.30 every Sunday.

- \* **St Marys Church, Old Church Road, Burham.**

Open daily 10.00am - 4.00pm .

A redundant Anglican Church under the care of the 'Churches Conservation Trust'. Occasional special C of E services are held there and events run by the Friends of St Marys.

- \* **The 'Church in Burham' (Methodist). Church St. Burham**

10.30am every Sunday.

---

## Eating and Drinking:

**The Watermans Arms, Wouldham.**

Tel. No.: 01634 681830

Pub/Restaurant/Pizza takeaway, Wouldham

**The Butchers Block**

Tel. No.: 01634 786626

Pub/Restaurant/takeaway, Burham

**The Robin Hood**

Tel. No.: 01634 861500

Pub/Restaurant/takeaway. Common Rd, Burham

**The Windmill Inn**

Tel. No.: 01634 864570

Pub/Restaurant/takeaway, Burham

**Happy House Chinese**

Tel. No.: 01634 668326

Takeaway, Burham

**The Medway Inn & Ruby's**

Tel. No.: 01634 869181

Pub/Bar meals/Indian Restaurant/takeaway, Wouldham.

**Fish & Chips Van:**

Tel. No.: 07840181091

Tues. Bluebell Hill Village hall.

4pm - 8pm

Wed. Burham car park

4pm - 8pm

Thur. Cuxton main street.

4pm - 8pm

Sat. Wouldham car park.

4pm - 8pm



## News from The Church in Burham (Methodist) Church Street, Burham



Sunday 3rd April	Morning Worship led by members	10:30am
Sunday 10th April	Palm Sunday; Holy communion led by Rev. Naomi Oates	10:30am
Sunday 14th April	Maundy Thursday; Reflective service led by Robin Oakley	7:30pm
Sunday 17th April	Easter Sunday. Morning Worship led by Geoff Harris	10:30am
Sunday 24th April	Morning Worship led by members	10:30am

On Easter Sunday there will be a Dawn Communion at Bluebell Picnic Site at 6.00am.

### **Lent Course**

This continues in the Church in Burham on Friday evenings at 7.30pm. For further information contact Rod Murr on 868075.

### **Book exchange**

This months Book Exchange will be held on Saturday April 2nd from 10.30 till 12 noon. Do join us to exchange your books and enjoy good company over a cup of coffee or tea and homemade cakes. Any profits will be sent to charity.

### **Film Club**

we are hoping to start this again shortly. If you would be interested in coming along on the first Wednesday of the month at 7.30pm, please let either Eileen Smith or Margaret Mather know. Watch this space for further news.

Continued ...



*Continued ...*

Requests for Baptisms, Weddings, or Funerals to one of the persons below:

Minister: The Rev'd Naomi Oates Tel. No. 07485 072407

Email: [naomi.oates@methodist.org.uk](mailto:naomi.oates@methodist.org.uk)

Stewards: Eileen Smith Tel. 01634 867022

Joyce Brown Tel. 01634 864413.

Rod Murr Tel. 01634 868075

### **FOOT CARE**

**For young or old in the comfort of your own home.  
Fully Qualified & Insured Foot Health Professional.**

**Tim Cook, DipFH, MCFHP, MAFHP**

Treatment for most foot conditions including:

- \* nail trimming,
- \* ingrown or fungal nails,
- \* corns and callus,
- \* cracked and dry heels,
- \* athletes foot and verrucas,
- \* treatment for diabetic patients to maintain good foot health.



Call **07450 943098** or email [theathletesfootcare@hotmail.com](mailto:theathletesfootcare@hotmail.com)

### **Flower Festival and Concert**

All Saints Church Wouldham on the 25th and 26th of June. We are keen to involve everyone who is interested. The theme for the festival is Countries around the world.



The weekend will close with a musical concert on Sunday the 26th. Tickets will be available nearer the time.

If you would like to make a display related to a country please contact Gwen on 07854400506 or [gwenworcester@hotmail.com](mailto:gwenworcester@hotmail.com)

# T. T. CARPETS & FLOORING

**DOMESTIC & COMMERCIAL SUPPLIED & FITTED**

Carpet, vinyl, laminate, luxury vinyl tiles,  
carpet tiles, safety flooring.

Call us today for all your flooring needs.  
Free estimates & measures. Fully insured.



**Tom Whiterod 01634 669033 / 07957757905**

email: [t.tcarpetsandflooring@yahoo.com](mailto:t.tcarpetsandflooring@yahoo.com)

Find us on Facebook

# AP SERVICES



**GRP FLAT ROOFING SPECIALIST**

**ROOFING REPAIRS**

ROOF WINDOWS, FASCIAS, SOFFITS, CLADDING & GUTTERING  
EXTERIOR PAINTING, FENCING, DECKING, PAVING & MORE...

**CALL NICK ON:**

**07949 588 464 & 01634 262 582**

[www.ap-services-kent.co.uk](http://www.ap-services-kent.co.uk)

**Sarah Willsey MCFHP MAFHP**  
Foot Health Professional

Treatments:

- \* Corns and Calluses
- \* Hard skin
- \* Verrucas
- \* Ingrown toe nails
- \* Thickened fungal nails
- \* Cracked heels
- \* Toe nail cutting and care
- \* Diabetic and high risk foot care and advice



Prices:

£40 First appointment

£37 Follow up

Concessions: for over 65s

£35 First appointment

£32 Follow up

Contact details:

Clinic: 01622 438550

Mobile: 07500 041535

Email: [sarah@yourhealthyfeet.co.uk](mailto:sarah@yourhealthyfeet.co.uk)

Website: [www.yourhealthyfeet.co.uk](http://www.yourhealthyfeet.co.uk)

## **April in Your Garden by Sue Durrani**

*'April – Sometimes you need a little rain in order to blossom.'*

April is upon us, and with the Easter weekend looming its often a popular time to be spending time in the garden. The clocks have now changed, which enables us to enjoy the lighter evenings outside as well. Hopefully by now your garden or outdoor space is starting to fill with life and colour, with shrubs and perennials starting to put on growth, and with spring bulbs still flowering away. If you have pots with bulbs in, move them to where you can see them, and for those that might have now gone over (i.e. crocus/snowdrops), move them back out of view so that they can die back & absorb as much nutrition as possible. Bulbs in pots will also benefit from a little feed right now, use a general purpose feed such as seaweed or blood, fish & bone, as this will give an extra boost to the flowers and help them to replenish the reserves lost this year ready for next year.

It's now time to prune back winter flowering shrubs, such as winter Jasmine, Cornus, and Viburnum so they can rejuvenate their growth in time for next winter. Also finish cutting back any perennial flower stems or dead material from the borders, including grasses, to allow the new growth to push through. Any last Roses or Hydrangea that need pruning or shaping should be done now too.

As the soil continues to warm up, it's also a great time to lift & divide perennials if they have got too big, or if you would like to space them out to fill spaces in the garden. If possible, dig out the whole clump and then use a spade or fork to cut through the middle, and from there divide into however many pieces you want. Just make sure that there are sufficient roots on each section to allow it to take. Replace one section back into the original hole with some fresh compost, & then plant the others where they're needed.

If you are sowing seeds for the flower garden then continue to sow seeds such as Lobelia, Pelargonium, Cosmos, and Sunflowers for summer displays. These will all flower from mid-summer right through to autumn adding bursts of colour to your beds and pots.

By now it's also safe to start bringing over-wintered tender plants out of the greenhouse but keep an eye on the night time temperatures as cold weather could damage any tender plants, so either bring them back in or cover them with fleece if a cold snap is forecast.

If you're sowing seeds for the veg plot then it should now be warm enough to sow direct into the soil.

*Continued ...*

*continued ...*

Consider successional planting to give a continuous crop of staple vegetables such as beetroot, spring onions, carrots, radish and lettuce. By sowing little and often it will mean there is less likely to be glut at any one time & will allow you to enjoy regular pickings from your plot with little wastage. Sowing every few weeks, or monthly from now until July, it will mean there is always a progression of planting and also harvesting. Peas, Broad Beans, parsnips, Kohl Rabi, Leeks, Turnip & Swede can all be sown in the ground now but protect the fresh shoots from pests such as pigeons and slugs. These can also be raised in module trays and planted out once they have a few sets of leaves, and this will help to give them a head start against those pests.

For sowing in the greenhouse or indoors, then mid-late April is the time to start pumpkins, squashes, courgettes and cucumbers, as well as French and Runner Beans. This will allow time for a further successional sowing next month to spread the harvest over a longer season. Most of these vegetables will also happily be grown amongst garden borders or in pots if space is tight or you want to try growing your own produce at home.

If you are planting, or transplanting, soft fruits such as strawberries or raspberries then April is a good time to get this task done.

Mulching veg beds in April will help to boost the soil ready for the growing season. Hopefully, you will have generated some good compost from your cuttings and kitchen waste over the last year which can now be put to good use as a mulch. By doing this after weeding and hoeing, it creates the ideal conditions for sowing seeds directly, and if you follow the 'no-dig' style of gardening then it will promote soil health as well. Other things to be doing in the garden now:

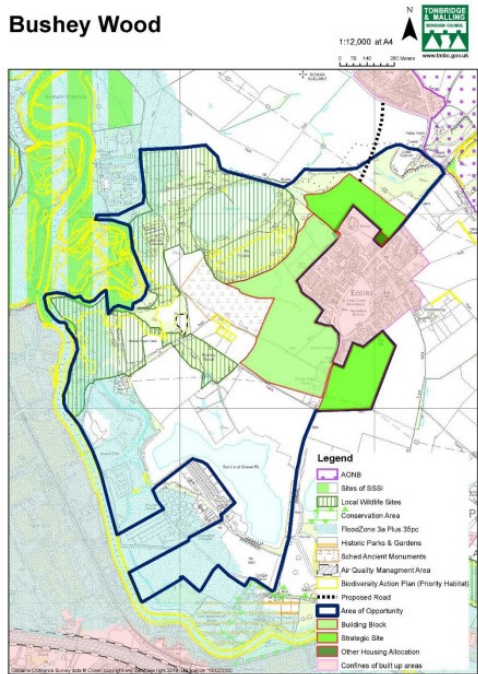
- \* Dahlia tubers that have been covered in the ground for overwintering can now be uncovered. Give them a mulch and protect young shoots from slug attack and also any frosts.
- \* If you have started a compost heap over winter, keep turning it regularly. Keep adding kitchen scraps, lawn and garden cuttings as well as shredded cardboard or paper and it will continue to generate fresh compost for use around the garden or veg plot.
- \* Many vegetables will benefit from companion planting, which helps to attract beneficial insects to deal with the less beneficial ones. By planting French Marigolds with Brassicas or Nasturtiums with beans, it will promote better plant health, as well as attracting pollinators.
- \* Deadhead Daffodils and Tulips as the flowers fade.
- \* And, keep bird feeders topped up as they will be busy nest building.

**Development Site  
Bushey Wood Phase 1  
Bull Lane  
Eccles**

This new development will impact all our lives and the deadline to comment on the proposals has passed, being the 12th of March, but all comments can be viewed on the Tonbridge and Malling Borough Council website. At the time of printing I have not been able to access it but hopefully it will be available soon.

Photo Ref: TMBC

**Bushey Wood**



**KCC Mobile Library** is free to join & use and will visit the following:

<b>Wouldham</b>	<b>Date (Tuesday)</b>	<b>Time</b>
Walker Burke Avenue	5th and 19th April	1:05pm - 1:35pm
Ravens Knowle	5th and 19th April	1:45pm - 2:15pm
<b>Burham</b>	<b>Date</b>	<b>Time</b>
Village Hall	5th and 19th April	2:25pm - 3:25pm
<b>Eccles</b>	<b>Date</b>	<b>Time</b>
Bull Lane by the Village Hall	5th and 19th April	3:45pm - 4:35pm

For further advise or book requests please e-mail:  
[joanne.woolgar@kent.gov.uk](mailto:joanne.woolgar@kent.gov.uk) or Tel. No. 0300 041 8558  
 or visit: <https://www.kent.gov.uk/leisure-and-community/libraries/visiting-a-library/mobile-libraries-during-coronavirus>

# CLARKES FUNERAL SERVICE

(R.G. KINGSBURY M.M.S. Dip)

WE ARE AN INDEPENDENT FAMILY BUSINESS OFFERING  
A 24 HOUR, PERSONAL, CARING SERVICE.

---

ARRANGEMENTS CAN BE MADE AT OUR OFFICE  
OR IN THE COMFORT OF YOUR OWN HOME

---

- **PRE-PAID FUNERAL PLANS AVAILABLE**
- **PRIVATE CHAPEL OF REST**
- **MEMORIALS SUPPLIED** ● **ALL AREAS COVERED**



**31 High Street, Snodland Tel: 01634 240458**





**BROADLEAF**  
TREE SURGERY

For your free quotation call  
**0800 999 53 23**  
**07429 903 594**

“ High quality & professional tree care.  
Fully qualified and insured with over 14 years of experience. ”

- Tree removal
- Crown reductions
- Hedge trimming
- Deadwooding
- Crown thinning
- Stump Grinding

[info@broadleaftreesurgery.co.uk](mailto:info@broadleaftreesurgery.co.uk)





**SCHOOL LANE  
BOARDING KENNELS & CATTERY**

*Authority licensed & inspected annually---*

*Local family run business*

*Long/ Short/Stays & special rates for extra long stays*

**SUPPORTED BY LOCAL VETS**

**01634 683149**

*Find us on Facebook*

**BARRY BLACK DOG TRAINING  
TELEPHONE HELP GIVEN @ REASONABLE  
RATES.**



**ALSO ONE 2 ONES- HOME VISITS or  
at ONE OF OUR GROUP CLASSES**

*Behaviour issues - puppies – obedience & agility classes*

*Professional Hands on Trainer*

*With over 36yrs experience.*

**KIND & UNDERSTANDING methods used**

**01634 669885**

*Find us on Facebook*

**BREEDERS OF QUALITY, GOOD NATURED, HEALTH  
CHECKED, LABRADORS & GERMAN SHORTHAIRED  
POINTERS**

**ALL PUPPIES ARE VET CHECKED & APPROVED.**

**CALL 01634 669885 for PUPPY AVAILABILITY**

*Find us on Facebook*



**BURHAM CHILDREN'S CENTRE**  
**Bell Lane, Burham. ME1 3SY**

**Due to the current situation with Covid-19  
please check online for updated support, advice and  
opening times.**

**Email: [tmcc@kent.gov.uk](mailto:tmcc@kent.gov.uk)**

**Tel No.: 03000 418008**

**or see our FACEBOOK PAGE**

**[www.kent.gov.uk/ccregistration](http://www.kent.gov.uk/ccregistration)**

**[www.facebook.com/Tonbridge-and-Malling-Childrens-Centres](http://www.facebook.com/Tonbridge-and-Malling-Childrens-Centres)**

---

**Burham Pre-School,  
Burham Village Hall**

Rated 'Good' by OFSTED

Email: [Burham.pre-school@hotmail.com](mailto:Burham.pre-school@hotmail.com)  
Visit: [burhampre-school@weebly.com](http://burhampre-school@weebly.com)

Contact Supervisor, Tracey Beechey, on  
Tel. No.: 07920 599287 or 07710 829954

**Sessions:**

Mon - Fri 9.15 - 11.45am

Mon - Fri 12.20 - 2.50pm

Mon - Fri. Lunch Club 11.45 - 12.20 pm

Optional 'early bird' drop off at 9am for £1.00

---

**JELLYBEANS PRE-SCHOOL, WOULDHAM VILLAGE HALL**

Our Ofsted Inspection found Jellybeans to be 'good'.

Sessions :

Mon - Thurs morning: 9.15am -11.45am

Mon - Thurs afternoons: 12.25pm - 2.55pm

Mon - Thurs Lunch Club: 11.45am - 12.25pm

Early drop off option available.

Feel free to visit at any time, no appointment necessary.

For further information please contact:

Mrs Donna Cook (Supervisor) on 07932551771

## Shops

**Frosts Service Station & Store**, Rochester Rd, Burham. 01634 861228

Opening times: Monday - Saturday: 7.00am - 9.00pm.  
Sunday: 7.00am - 8.00pm

**The Vale Bakery**, 209 Rochester Rd, Burham 01634 861572

Opening times: Tuesday to Friday: 8:30am - 4:00pm.

---

## Church activities:

### All Saints, Wouldham Church Choir:

Choir practices are normally held in the church at 7:30pm on Thursdays, and there are vacancies for over-18s in all voice parts.

For more information please contact Douglas Henn-Macrae  
Tel. No. 01634 683096 or e-mail [douglas@gundulf.org.uk](mailto:douglas@gundulf.org.uk)

**Church Bell Ringing:** All Saints Church, Wouldham.  
8pm on Wednesdays

New ringers welcome.

For more information contact Tina Miles on Tel: 07967 795913.

---

**Film Club** The Church in Burham, Church St.  
Contact Eileen Smith on: 01634867022

---

## ADVERTISING IN THIS MAGAZINE

<b>Size 1.</b> - 6cm x 6cm. 1/6 <sup>th</sup> of A5 page.	1 issue £10	5 issues £45	10 issues £80
<b>Size 2.</b> – 12cm width x 6cm height. 1/3 <sup>rd</sup> of A5 page	1 issue £15	5 issues £60	10 issues £100
<b>Size 3</b> – 12cm width x 12cm height 2/3 <sup>rd</sup> of A5 page.	1 issue £25	5 issues £100	10 issues £180
<b>Full page.</b> A5 12cm width x 19cm height	1 issue £30	5 issues £120	10 issues £210

## Richard Watts Charities

Established since 1579, Richard Watts Charities provide grants and services to people living in the ME1 and ME2 areas and to schools and organisations within the area.

### Applications can be made for:

- \* Almshouse accommodation
- \* Essential household items
- \* Out-pensions
- \* Home help
- \* Medway Telecare
- \* Lawn cutting
- \* Education/apprenticeship grants
- \* Grants to organisations
- \*



For more information please call **01634 842194**  
[www.richardwatts.org.uk](http://www.richardwatts.org.uk)

### Almshouse Accommodation

We have 67 self-contained flats and bungalows in Rochester. To apply you must be living in the postcode areas of ME1 or ME2 (people returning to the area to be near family or friends may be considered); Aged State Pension or over; No longer employed; In need of accommodation; In reasonable health and able to look after yourself.

**Lawn Cutting Service:** funded by Richard Watts Charities (RWC) for older or disabled people who are unable to cut the lawn themselves.

**Grants and Services:** Grants and free services are awarded to people who are financially eligible.

**Household Essential Grants:** for essential items such as clothing, cookers or fridges for people of any age group.

**Out Pension Grant:** a top-up payment of £15 per week can be made to retired applicants. Our pensions are paid directly into bank or building society accounts every four weeks.

*Continued ...*

*Continued ...*

**Educational Grants:** for items associated with education or training, e.g. books, equipment, uniforms, special needs arrangements, music, or outings.

**Apprenticeship Grants:** apprenticeship grants of up to £100 are available to new apprentices under the age of 25 with confirmed apprenticeships.

**Home Help Service:** the Home Help Service provides assistance to people at home and in the local community. It includes housework, shopping and laundry but does not personal care. The charge is currently £12.50 per hour unless a free service is awarded.

**Medway Telecare Service (formerly Lifeline);** is provided by Kyndi but eligible people can apply to RWC for funding.

### **Burham Village Hall and Burham Old School Community Centre** **Social groups & meetings**

**Women's Institute** - 3rd Tuesday of each month at the Burham Village Hall. 7.30pm. Contact Eileen Smith 01634 867022.

**Thursday Morning Community Club** - Burham Old School Community Centre, 10.30am – 12 noon. Tea, coffee, cakes. Friendly gatherings & outings. **April 7, 14, 21, 28.** Contact: 01634 867669.

**Hi Kent Hearing Clinic here on 14th April**

### **Activity/sport**

**Burham Baton Twirlers** -Village Hall every other Thursday 4.15-6.30pm.  
Contact Lyn Robinson 07729 373558.

**Short Mat Bowls** Monday & Wednesdays in Burham Village Hall, 7.30pm – 9.30pm. New Members are always welcome. Contact - Irene Benton 01634 867466.

**Force Medway Group** - Self Defence in Burham Village Hall.  
Weds 6 -7.15pm. Fri 6-8.30pm. Contact Stuart Lowe 07557 906249.

## Halls for hire:

### Wouldham Village Hall - Available for:

- \* Private functions/parties
- \* Regular bookings (for groups to meet or small businesses to hold classes)
- \* Meeting or training sessions
- \*



#### Costs:

- \* £11 per hour for private bookings, (minimum of 3 hours hire)
- \* £13 per hour for business bookings or
- \* A damage deposit of £50 is required when booking the hall.
- \* Deposit cheques will only be cashed if the hall is not left in good order to rubbish not taken away.

To book, Email: [wouldhamvillagehall@gmail.com](mailto:wouldhamvillagehall@gmail.com)

### Burham Village Hall:

A large modern hall located in the centre of the village next to the Village Recreation Ground with a large car park. It has many facilities including a large main room, a kitchen, toilet facilities including disabled facilities and access. Two other smaller rooms are also available. Post Code ME1 3RJ.



#### Costs:

- \* £10 per hour for Monday to Friday 8:00am to 8:30pm
- \* £18 to £25 per hour for Weekends from Fridays at 8:30pm depending on the activity.

To book, contact Aileen Bergin on 07842 883028

### Burham Old School Community Centre:

Formerly the village infant school full of character with parking a short walk away in Bell Lane, the building has a large hall and a smaller hall, with toilet facilities, including disabled access, and used for local clubs and charity events to name a few.



#### Costs:

- \* £10 per hour week days and £12 per hour at weekends
- To book, contact Thurza Browne on 01634 863322

**You can request to receive a printed copy of this free magazine delivered to you by sending your name, address & contact details to:**

WOULDHAM PC CLERK: 07904 281522  
or email [clerk@wouldhampc.co.uk](mailto:clerk@wouldhampc.co.uk)

BURHAM PC CLERK: 01634 685936  
or email [pam@burhampc.co.uk](mailto:pam@burhampc.co.uk)

**We are leaving some printed copies in the following places:**

<b><u>BURHAM</u></b>	<b><u>WOULDHAM</u></b>
<b>Vale Bakery, Frosts, Parish Office, Methodist Church &amp; St Mary's Old Church</b>	<b>The Medway Inn, Watermans Arms &amp; All Saints Church</b>

It can also be viewed online at any of the following:

[www.wouldhamchurch.org.uk](http://www.wouldhamchurch.org.uk)

[www.burhampc.kentparishes.gov.uk/](http://www.burhampc.kentparishes.gov.uk/)

### **The Community Magazine for Burham and Wouldham**

If you would like anything including in an edition please forward details to me by the **10<sup>th</sup> day of the previous month.**

Editor: Pamla Walker Tel. 07988 645801  
Email: [editorwbpvmagazine@gmail.com](mailto:editorwbpvmagazine@gmail.com)

*Please note; there are combined July/August & December/January editions.*

#### **A Note From The Editor**

We hope you enjoy reading this Magazine and welcome your news items and articles. However, we reserve the right to edit or not to publish.

The publication of any advertisement does not carry the Church's endorsement. Placing loose inserts into the Magazine is not permitted.

*Printed by Hadlum Print & Signs  
27-31 St Andrews Rd. Maidstone, ME16 9AN*