

# The Community Magazine for Burham, Wouldham & Peters Village



## October 2021



*Published by  
the Church of England Parish of Burham & Wouldham.  
Produced and delivered by local volunteers.*

**THE CHURCH OF ENGLAND PARISH OF BURHAM & WOULDHAM**

**All Saints Church, Wouldham Rector: Rev'd Mike Hayes**

**Tel: 07964 697556**

**Email: [Mikejhayes@hotmail.co.uk](mailto:Mikejhayes@hotmail.co.uk)**

*Usual working days are Sundays, Mondays, & Fridays.*



| Position                         | Persons                    | Contact details                              |
|----------------------------------|----------------------------|--|
| Church Wardens                   | Mr Tim Reed<br>Mr Ken Kirk | 01634 666895<br>07818 361608                 |
| Curate                           | Rev. Chris Winter          | chriswinter612@gmail.com                     |
| Organist & Choirmaster           | Douglas Henn-Macrae        | 01634 683096<br>douglas@gundulf.org.uk       |
| Baptisms & church Secretary      | Mrs Gwen Worcester         | 01634 672060                                 |
| Weddings & church flowers        | Mrs Catherine Gore         | 01634 404742                                 |
| Monuments & churchyard enquiries | Rev'd Mike Hayes           | 07964 697556<br>Mikejhayes@hotmail.co.uk     |
| Church Safeguarding officer      | Mrs Helen Wells            | Tel. 01634 685935<br>hwells2@btinternet.com  |
| Bell ringing                     | Miss Tina Miles            | 07967 795913                                 |
| Church Treasurer                 | Mrs Nicky Grimes           | 01634 864319                                 |
| Magazine Editor                  | Miss Pamla Walker          | 07988 645801<br>editorwbpvmagazine@gmail.com |

View the magazine online at:

Church website: [www.wouldhamchurch.org.uk](http://www.wouldhamchurch.org.uk)

Wouldham Parish Council: [www.wouldhampc.com](http://www.wouldhampc.com)

Burham Parish Council: [www.burhampc.kentparishes.gov.uk](http://www.burhampc.kentparishes.gov.uk)

If you would like to receive **The Diocese of Rochester Newsletter**, go to the link here for the **E-Newsletter**:

**<https://www.rochester.anglican.org/communications/diocesan-publications/enewsletter/>**

Hello and welcome to the October 2021 edition of the magazine. As the nights grow darker earlier it is a time for keeping safe and warm and maybe starting a new hobby such as crafting or art or even writing. I do a bit of each in the winter months and it is so rewarding. Over the past 18 months I have been helping a charity called *Crafting for Carers* who have supplied thousands of sets of scrubs for the NHS and care workers along with knitted items for premature babies, ear savers (so masks can be attached to a buttoned band rather than sore ears), bags for cancer patients, and knitted twiddle muffs/blankets, and dignity bibs for dementia patients (made from old shirts) to cover and protect their clothes whilst eating; to name but a few. It has been wonderful to meet lots of crafters albeit virtually and the support for newbie crafters is amazing so if you fancy a new hobby have a look into creating something unique that could help others. It's so easy sitting knitting or crocheting a scarf whilst enjoying your favourite box set ...



Or, rather, you may be planning next year's staycation. I would highly recommend a beautiful place we have just returned from; The Outer Hebrides, which still recognises Sunday as a holy day and most places close for the sabbath..

With my very best wishes,  
Pamla Dawn Walker, Editor  
editorwbpvmagazine@gmail.com

**Wouldham Community Initiative** are looking for volunteers.  
To help with activities such as the Fun day.

**Wouldham Neighbourhood Watch**

We are proposing setting up a scheme so if you are interested in helping please let me or Theresa know.

Please contact Theresa on tgraypc@gmail.com for details



## CHURCH OF ENGLAND

All Saints Church, Wouldham

**Sunday:**

**Morning prayer at 9:15 am**

**Sung Eucharist at 10:30am**

### October Services

5<sup>th</sup> October

The eighteenth Sunday after Trinity;  
Harvest: Speaker from Medway Food Bank

10th October

The nineteenth Sunday after Trinity

17th October

The twentieth Sunday after Trinity

24th October

The Last Sunday after Trinity:

All are welcome to attend in person but we will continue to offer the option of joining us on ZOOM for those who need it. Anyone who doesn't get the link please email Mike to request it on:

**[mikejhaves@hotmail.co.uk](mailto:mikejhaves@hotmail.co.uk)**

Services will also be recorded and uploaded to the church Facebook page.



### Candle Prayer Time

The prayer group continues to pray at 7:30pm every Wednesday. You are also invited to join in prayer with a lighted candle from home. With much love to all in Wouldham, Burham and Peters village.



From all at  
**All Saints, Wouldham and  
The Church in Burham**

If you would like to send in prayer requests please contact:  
Gwen Worcester on: 01634 672060  
**[gwenworcester@hotmail.com](mailto:gwenworcester@hotmail.com)**

## Dates for walks in October 2021

Non-members are welcome.



We explore the beautiful Kent countryside within Tonbridge & Malling and surrounding areas. Our group walks are mostly circular with a moderate pace over a distance of 5-6 miles. You don't have to be a Ramblers member to try out a couple of walks with us, to help you decide if you'd like to join. Walks start at 10.00 or 10.30am. For meeting points, details and walk leader contacts, see the programme link at: [www.tonbridgandmallingeramblers.org.uk](http://www.tonbridgandmallingeramblers.org.uk)

or email: [info@tonbridgeandmallingeramblers.org.uk](mailto:info@tonbridgeandmallingeramblers.org.uk).

| Date           | Route   | Distance  |
|----------------|---|-----------|
| Sunday 3rd     | Circular walk from Bearsted   | 5.5 miles |
| Thursday 7th   | A flat walk along the Medway Valley Path to Burham old church and on to the Roman memorial and return.  | 6 miles   |
| Sunday 10th    | Circular walk from Otford   | 5.5 miles |
| Wednesday 13th | From Kemsing through St Clere Estate then up the North Downs Way and back   | 5.5 miles |
| Sunday 17th    | Flat farmland walk from Golden Green  | 5 miles   |
| Thursday 21st  | A varied circular walk from Speldhurst with some hills and views of the Medway.   | 5.5 miles |
| Sunday 24th    | Hosts of Oasts! A flat field and track walk from Hunton, with short sections on roads. This walk includes rivers, ponds and a waterwheel, with fine views of the ridge. | 5 miles   |
| Thursday 28th  | A gentle climb from Ryarsh to the Pilgrim's Way   | 5.5 miles |
| Sunday 31st    | A gentle walk from Wrotham along the bottom of the Downs to the Pilgrims' Way   | 5 miles   |

We look forward to welcoming you on a walk soon!



THE CHURCHES  
CONSERVATION TRUST

I will be including some history of the area for people new to the villages and Archaeologist, David Britchfield based in Wouldham, of Ravelin Archaeological Services will be sharing information in upcoming editions but until then, I thought a little taster might whet your appetite and encourage you to visit the beautiful buildings we have on our doorstep. I love fonts and to have the one below close by, which has been there for around 1000 years is quite special, I think. If you have not visited The Church of St. Mary, the Virgin, in Burham it is a beautiful and peaceful place which is well worth a stroll along whichever path leads you there. It allows you to step back in time and I am sure you'll love the architecture of this Grade I listed building, which is now only used a few times a year. It is rightly under the care of The Churches Conservation Trust for future generations to enjoy.

The Churches Conservation trust is the national charity that cares for and preserves English churches of historic, architectural or archaeological importance. It promotes public enjoyment of them and their use as an educational and community resource.

Taken from [Master\\_01\\_mono \(visitchurches.org.uk\)](http://www.visitchurches.org.uk)

Pamla, Editor



The Church of St. Mary the Virgin,  
Burham

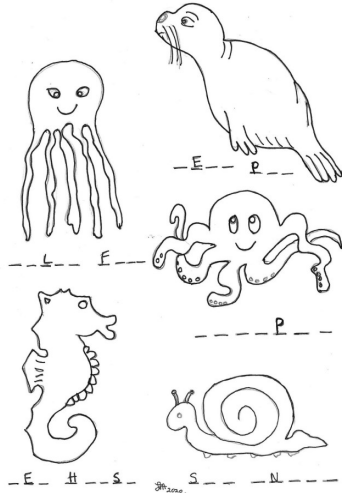


Norman font

## Wouldham School Prayer and Praise

Will be held on the third Wednesday of every month at 4pm  
These sessions will be lead by the children,  
starting on the 20th of October

SEA CREATURES ONE



**Burham Community Centre**

**Messy Church**

**Friday the 29th October at 4pm**

**Pre-Halloween Light Festival**

### **All Saints Church, Wouldham Toddler Church**

Every Friday in term-time 9.15am to 10.15am

For babies, toddlers, parents, and carers.  
Join us for tea, conversation, play, story, song, and prayer.

*They are intelligent and ready to learn ...*

---

**Music in Church:** Douglas Henn-Macrae took over as Choir Director in June. Choir Practice is normally held on Thursdays at 7.30pm.

New members are more than welcome to join us.

**[www.wouldhamchurch.org.uk](http://www.wouldhamchurch.org.uk)**

# News from The Church in Burham (Methodist)



We are continuing to hold a short service at 10.30am each Sunday to which all are welcome. This is a short informal get-together with music, prayers, readings and a short talk. Do come and join us on Church Street where we serve coffee, tea, and biscuits afterwards with a time to chat.

The first Book Exchange since Lock-down was a great success and we shall continue to hold this on the first Saturday of the month from 10.30 am till 12.00 noon. Everyone is welcome to bring books they have read to exchange them for others from our selection. Coffee, tea and homemade cakes are served for which we ask a small donation and all profits are donated to charity. Do join us as we start to get back to normality!

We will be looking at starting again our other activities shortly so keep an eye open for announcements.

Many of you know that Rev. Naomi Oates is currently on maternity leave and we are looking forward to her coming back during October.

People have enjoyed the on-line services provided by the Circuit and it is likely that these will continue for some time yet.

You can also dial in and listen to these services by phone if you are not online by visiting:

<https://www.nkmethodists.org.uk/news/invitation-to-worship-from-home.html>

Minister: The Rev'd Bonni-Belle Pickard

Tel. No. 07590 564477

Email: [bonni-belle.pickard@methodist.org.uk](mailto:bonni-belle.pickard@methodist.org.uk)

Stewards: Eileen Smith      Tel. 01634 867022

Joyce Brown      Tel. 01634 864413.

Rod Murr      Tel. 01634 868075

Please contact any of the above for information regarding:  
Baptisms, weddings, and funerals.



*A day in the life of ...* Mike & Liz O'Regan

*Job title:* Publicans  
of The Medway Inn

*When did you start this role?* October 2011 managing the Toastmasters in Burham. Purchased The Medway Inn in 2014. Also ran the Windmill in Burham between 2015/2017 alongside The Medway Inn.

*What qualifications do you need to perform this role?* DPS (Dedicated Premises Supervisor Licence). Personal Licences, for the sale of alcohol, Level 3 Food & Hygiene Supervisor.

*What attracted you to this position?* Grew up around pub environments via friends and family. Both worked in pubs and hospitality in our early years. We always enjoyed the buzz and the atmosphere surrounding pubs.

*What is your favourite part of the job?* We love live music, especially the Jam nights as we all get to enjoy listening to some very talented musicians. Pre Covid, we always loved organising the Children's Halloween & Christmas Parties, creating a fun evening for the whole family to enjoy; we hope to be able to continue with these events for 2021. Our minds are always working overtime, trying to create innovative ideas to ensure our guests get the best possible service and products at a very reasonable price.

*And the least?* Most Publicans tend to be night owls, so would have to say that the least enjoyable part of the job would be early morning Drey deliveries.

*What is a typical day like for you?* Take in deliveries, an hour or so book-keeping, stock take and ordering, ensuring the bar, courtyard and outside areas are in a clean and presentable state in time for opening. Watering the flowers, completing food and hygiene paperwork. We also do a weekly line clean and cellar clean as well as maintenance of glass washer/Ice Machine etc. We are lucky to have a great team of staff that take care of a lot of other duties, which really helps to ease the burden. We also try to take an hour or two each day to enjoy a walk around our beautiful countryside with 'Ozzie', our little Jack Russell.

*What advice would you give to someone thinking of this position as a career?* Think long and hard as it can be all consuming. Aim for a 'free of tie' tenancy, or ideally buy your own pub if you are able. Avoid a tied tenancy unless you have a good catering background so can aim at a food led pub.

*Can you share the funniest, embarrassing or most memorable story?* Has to be when Mike fell asleep on the toilet on St Patrick's day after consuming too much of the black stuff.

*How would you rate job satisfaction out of 10?* 10/10 most days and 1/10 on the stressful days.

## Boxley Timber & Fencing Supplies



Quality Sheds & Summerhouses.  
Sleepers & Decking.  
Gates & Trellis made to size.  
All types of Fencing.  
Collection & Delivery.  
Stockist of tools:  
DeWalt, Bahco, Ryobi & Quality Faith-  
full Tools  
A family run business offering friendly  
professional advice at  
Boxley Sawmill,  
Pilgrims Way,  
Boxley, Maidstone,  
ME14 3EB  
Tel. No. 01622 753953  
Fax No. 01622 768329



## QUALIFIED FEMALE PLUMBER

Specialising in  
small  
maintenance &  
repairs



For a professional, friendly and  
reliable service

**CALL RACHEL: 07731 756947**  
**[www.haslerplumbing.co.uk](http://www.haslerplumbing.co.uk)**

## FOOT CARE

**For young or old in the comfort of your own home.**  
**Fully Qualified & Insured Foot Health Professional.**  
**Tim Cook, DipFH, MCFHP, MAFHP**

Treatment for most foot conditions including:

- \* nail trimming,
- \* ingrown or fungal nails,
- \* corns and callus,
- \* cracked and dry heels,
- \* athletes foot and verrucas,
- \* treatment for diabetic patients to maintain good  
foot health.



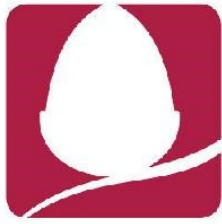
Call **07450 943098** or email **[theathletesfootcare@hotmail.com](mailto:theathletesfootcare@hotmail.com)**

unicef | Crowdfunder

# GIVE THE WORLD A SHOT

Progress in vaccinating the UK has been fantastic  
but we need to ensure the world is following suit.

**You can donate at [www.vaccinaid.org](http://www.vaccinaid.org)**



# ACORN STAIRLIFTS

ACCREDITED PARTNER

## NEXT DAY STAIRLIFTS



LIFTS MADE IN THE UK ~ 24/7 EMERGENCY COVER

LOCAL KENT SURVEYOR

FOR A FREE BROCHURE PLEASE CALL

**0800 016 9276**

[www.nextdaystairlifts.com](http://www.nextdaystairlifts.com)

## Burham Parish Council news September 2021

Keep up to date with Parish Council business by visiting:

Website: [www.burhampc.kentparishes.gov.uk](http://www.burhampc.kentparishes.gov.uk)

Facebook page: **Burham Parish Council**



Whilst normally we don't hold a meeting in August, this year (as last year), a meeting was held on the 1st of September (due to other commitments).

Horse barriers New Court Rd footpath/cycleway: The deadline for comments on the public consultation was the 12th of September 2021, so any update will be available in due course.

War Memorial Centenary Celebration Event (Re-dedication): 23 October 2021 at 2.15 pm at the war memorial. Please see separate poster.

Don't forget we have a recycling site which takes plastics (some), all glass, cans, CD & books, clothing and cardboard/paper. Both the cardboard and the clothing banks generate funds, so it is worthwhile in recycling in this manner as it keeps the Precept charge lower. The clothing bank generates around £150 per month, which is fantastic. The cardboard does generate funds but we are charged every time the bank is exchanged, hence why we request that boxes, etc. are broken down to ensure the best use of the space.

One way System (part) Church Street: We have received the following from KCC Highways *"Just from preliminary review of the proposals we can confirm that it would not be possible to make the road one way in part, as there has to be somewhere for vehicles to turn using public highway land such as a side road. Any one way scheme would require the whole length of Church Street to be made one way, which would allow drivers to carry on down Rochester Road or New Court Road as a safe alternative."*

Saturday Bulky refuse: As yet there is no further update.

If you have any items that you would like the Parish Council to discuss just give me a call on 01634 685936. You can also email me on [pam@burhampc.co.uk](mailto:pam@burhampc.co.uk) or join in at the next scheduled meeting, which is due on the 25th of October 2021.

Pam Saunders, Clerk



WAR MEMORIAL CENTENARY CELEBRATION EVENT  
REDEDICATION 1921—2021

SATURDAY 23<sup>RD</sup> OF OCTOBER AT 2:15PM AT THE  
WAR MEMORIAL



You are all invited to the above event.



# Aylesford Farmer's Market

Fresh local produce  
from farm to kitchen



3<sup>rd</sup> Sunday of every month 9.30am - 1.30pm

- \* 27 food stalls (including lots of **vegan** goodies such as: beers, cakes, cheeses, meat substitutes, sauces, pastries, salads, and pizzas along with **gluten free** options.
- \* Cookery demonstration.
- \* Nine home & garden stalls
- \* Craft stalls.

The next market will be on:  
Sunday the 17<sup>th</sup> of October

**Aylesford Priory**  
**Aylesford**  
**ME20 7BX**

A donation box can be found in the car park to help support The Priory.



## Art Exhibition in Wouldham All Saints Church.

The doors will open to visitors from 10am to 4pm on Saturday the 2<sup>nd</sup> of October and on Sunday the 3<sup>rd</sup> of October from 12 noon after the Harvest Festival Service, until 4pm, which you would be most welcome to attend.

There will be refreshments available during the day.

Best Wishes  
Gwen Worcester

### **ST MARY'S CHURCH, BURHAM** *(down by the river)*

Come and see historic Burham photos projected onto the outside of the church. Many artworks will be inside the church, but also more outside in the grounds. Bring a torch and use the flash to take photos.

ST MARY'S CHURCH BURHAM ME1 3XY  
October 15th -16th 6.30-9.30pm

# FILAMENTS II

Installation of threads light and projection

ARTISTS  
Elizabeth Burman  
Karen Crosby  
Rosie James  
Ruth Payne  
Linda Simon

LOTTERY FUNDED  
Supported using public funding by  
**ARTS COUNCIL ENGLAND**

Please bring a torch

Friends of St. Mary's Church, Burham 2021 events can be found by visiting: [www.facebook.com/stmarysburham](https://www.facebook.com/stmarysburham) or by contacting Rosie on 01634 672346.

## Visiting household waste recycling centres during the covid-19 pandemic

Our household waste and recycling centres (HWRCs) at:

**Capstone, Hoath Way, Cuxton Site (Medway Council) & Tovil (Kent County Council)** are open for essential use only. You can only use these sites if there's a risk of injury, health or harm by storing your waste at home.

To be able to visit a HWRC **you must book a slot online in advance**. Please note that slots are very limited in order to maintain social distancing for staff and visitors. You will only be able to book one visit in any 4 week period per household to ensure everyone can use sites safely. Kent residents visiting Medway Council sites must show Identification:

[Visiting a Household Waste Recycling Centre during coronavirus - Kent County Council](#)

**SATURDAY WASTE COLLECTION IS STILL SUSPENDED  
UNTIL FURTHER NOTICE**

TMBC Helpline 01732 844522

[www.tmbc.gov.uk](http://www.tmbc.gov.uk)



**Elwood**  
*Painting and  
Decorating Services*

**Qualified female  
Painter and Decorator.**

**10 years experience**

Interior and Exterior painting

Wallpapering

No job too small

Free quote

Email:

*Elwoodpainting@outlook.com*

*Telephone:  
01634 308933  
07738083474*

## THE HENRY PETERS CHARITY

This charity was set up by Henry Peters in his will around 1912 to be distributed to the sick and poor of Wouldham by the Parish Council. The trustees have agreed that the payments could be used to fund residents getting to and from the doctors' surgery or hospital.



## Parish information

BURHAM PARISH COUNCIL: Mon-Friday, 10am - 2pm

Pam Saunders, Clerk: Tel: 01634 685936.

Email: [pam@burhampc.co.uk](mailto:pam@burhampc.co.uk)      [www.burhampc.kentparishes.gov.uk](http://www.burhampc.kentparishes.gov.uk).

The Parish Office, Rochester Road, Burham. ME1 3RJ

Meetings usually the last Monday in the month.

Next Council meeting: 25th October 2021.

---

WOULDHAM PARISH COUNCIL:

Tina Miles, Clerk, Tel. No. 07904281522

Email: [clerk@wouldhampc.co.uk](mailto:clerk@wouldhampc.co.uk)

[www.wouldhampc.com](http://www.wouldhampc.com)

Our next meeting is on the 5th of October. For details about how to join please see the agenda published on [wouldhampc.com](http://wouldhampc.com)

---

COMMUNITY WARDEN:

Vivien Hickmott 07813694140

Police:

PCSO Samir Patangwa.

Non emergency Tel. No.: 101

TRANSPORT:

Bus Services: Arriva No. 155.

Clarks of London's commuter coach service:

[www.clarkescommute.co.uk](http://www.clarkescommute.co.uk)

The 764a and 764b service picks up from bus stops:

Keepers Cottage Lane (05:52 & 06:30) &

Village Road (05:50 and 06:28). or call: 020 8778 6697.

---

ALLOTMENTS: To enquire about the availability of allotments, contact:

Burham: Dave Young 01634 867669.

Wouldham: Sue Durrani 01634 682363

**PETERS  
VILLAGE**



Contact Steve at:

[Petersvillagenhw@gmail.com](mailto:Petersvillagenhw@gmail.com)



**Phoenix Medical Practice**  
**33 Bell Lane, Burham, ME1 3SX. Tel: 01634 867982.**

**www.phoenixsurgery-burham.nhs.uk**

| <b>Surgery opening times</b>    | <b>Opens</b> | <b>Closes</b> |
|---------------------------------|--------------|---------------|
| Monday & Thursday               | 8:30 am      | 5:00pm        |
| Tuesday, Wednesday & Friday     | 8:30am       | 6:00pm        |
| <b>Dispensary opening times</b> | <b>Opens</b> | <b>Closes</b> |
| Monday & Thursday               | 8:45am       | 12:00 noon    |
|                                 | 2:00pm       | 4:45pm        |
| Tuesday, Wednesday & Friday     | 8:45am       | 12:00 noon    |
|                                 | 2:00pm       | 6:15pm        |

**NHS111:** If you require urgent medical help ring 111 or visit 111.nhs.uk

**Defibrillators** are situated outside: Burham Parish Office  
Wouldham Village Hall  
Opposite the village sign on Wouldham High Street

**If a machine is needed call 999 for the code and instructions**

**Prescriptions** can be arranged to be collected, thanks to a service offered by the church. The surgery requires 7 days notice to prepare them and 24 hours notice is required for volunteers to collect them. Contact Rachel Harris (who will be available to deliver medicines on Tuesdays and Thursdays) on 07725 289194 for more details.

**Hearing aids** availability and maintenance from <https://hikent.org.uk> are looking for volunteers to help with the aftercare clinics they normally hold on the 2nd Thursday of the month at Burham Community Centre. Ring 01622 691151 for more information and updates of when the free of charge drop-ins will resume.

## *Notifications*

### *Weddings:*



*4th of September: Silas Wharton and Natasha Shutler*

### *Funerals:*



*20th of August - Andrew Stolton*

*10th of September - Liz Sage*

*Much love to their families*

**KCC Mobile Library** is free to join & use and will visit the following:

| <b>Wouldham</b>     | <b>Date (Tuesday)</b> | <b>Time</b>     |
|---------------------|-----------------------|-----------------|
| Walker Burke Avenue | 5th & 19th October    | 1:05pm - 1:35pm |
| Ravens Knowle       | 5th & 19th October    | 1:45pm - 2:15pm |

| <b>Burham</b> | <b>Date</b>        | <b>Time</b>     |
|---------------|--------------------|-----------------|
| Village Hall  | 5th & 19th October | 2:25pm - 3:25pm |

| <b>Eccles</b>                 | <b>Date</b>        | <b>Time</b>     |
|-------------------------------|--------------------|-----------------|
| Bull Lane by the Village Hall | 5th & 19th October | 3:45pm - 4:35pm |

For further advise or book requests please e-mail:

[jonne.woolgar@kent.gov.uk](mailto:jonne.woolgar@kent.gov.uk) Tel. No. 0300 041 8558

or visit: <https://www.kent.gov.uk/leisure-and-community/libraries/visiting-a-library/mobile-libraries-during-coronavirus>

## Churches:

### Church of England Parish of Burham & Wouldham:

1. **All Saints, High Street, Wouldham.**  
Holy Communion at 10.30 every Sunday.  
You can join in on Zoom by emailing Mike Hayes for the link.
  2. **St Marys Church, Burham.** Old Church Rd,  
Open daily 10.00am - 4.00pm . Closed during ‘lock down’  
A redundant Anglican Church under the care of the ‘Churches  
Conservation Trust’. Occasional special C of E services are held  
there and events run by the Friends of St Marys.
  3. **The ‘Church in Burham’ (Methodist). Church St. Burham**
- 

### Eating and Drinking:

**The Watermans Arms, Wouldham.** Tel. No.: 01634 681830  
Pub/Restaurant/Pizza takeaway, Wouldham

**The Butchers Block** Tel. No.: 01634 786626  
Pub/Restaurant/takeaway, Burham

**The Robin Hood** Tel. No.: 01634 861500  
Pub/Restaurant/takeaway. Common Rd, Burham

**The Windmill Inn** Tel. No.: 01634 864570  
Pub/Restaurant/takeaway, Burham

**Happy House Chinese** Tel. No.: 01634 668326  
Takeaway, Burham

**Fish & Chips Van:** Tel. No.: 07840181091  
Tues. Bluebell Hill Village hall. 4pm - 8pm  
Wed. Burham car park 4pm - 8pm  
Thur. Cuxton main street. 4pm - 8pm  
Sat. Wouldham car park. 4pm - 8pm



# T. T. CARPETS & FLOORING

DOMESTIC & COMMERCIAL SUPPLIED & FITTED

Carpet, vinyl, laminate, luxury vinyl tiles,  
carpet tiles, safety flooring.

Call us today for all your flooring needs.  
Free estimates & measures. Fully insured.



**Tom Whiterod 01634 669033 / 07957757905**

email: [t.tcarpetsandflooring@yahoo.com](mailto:t.tcarpetsandflooring@yahoo.com)

Find us on Facebook

# AP SERVICES



**GRP FLAT ROOFING SPECIALIST**

**ROOFING REPAIRS**

ROOF WINDOWS, FASCIAS, SOFFITS, CLADDING & GUTTERING  
EXTERIOR PAINTING, FENCING, DECKING, PAVING & MORE...

**CALL NICK ON:**

**07949 588 464 & 01634 262 582**

[www.ap-services-kent.co.uk](http://www.ap-services-kent.co.uk)

**Sarah Willsey MCFHP MAFHP**  
Foot Health Professional

Treatments:

- \* Corns and Calluses
- \* Hard skin
- \* Verrucas
- \* Ingrown toe nails
- \* Thickened fungal nails
- \* Cracked heels
- \* Toe nail cutting and care
- \* Diabetic and high risk foot care and advice



Prices:

£40 First appointment

£37 Follow up

Concessions: for over 65s

£35 First appointment

£32 Follow up

Contact details:

Clinic: 01622 438550

Mobile: 07500 041535

Email: [sarah@yourhealthyfeet.co.uk](mailto:sarah@yourhealthyfeet.co.uk)

Website: [www.yourhealthyfeet.co.uk](http://www.yourhealthyfeet.co.uk)

## October in Your Garden

*'Listen! The wind is rising, and the air is wild with leaves,  
we have had our summer days, now for October eves.'*

*Humbert Wolfe*

October is the month of change, the days are shortening with the clocks going back at the end of the month, & the air feels crisp with cooler weather on the horizon. It is often seen as the end of the gardening year once the clocks change, not least because the fewer daylight hours offer less opportunities to get out to enjoy our gardens. However there is still plenty to be doing in the garden through Autumn to prepare it for winter and into next year.

Let's not forget that October brings those fantastic autumn shades; the leaves change from green through to reds and burnt copper before finally falling to the ground. The garden flowers that hold on through to the frosts usually exhibit a similar colour theme with the reds, oranges and yellows all standing out in the fading light. If you haven't already got trees and shrubs in your garden that exhibit these autumnal colours, then it's worth considering adding one such as: Acer, Euonymus alatus, or Callicarpa as it will extend the season of interest well into early winter.

Here in the south we are less likely to be subjected to frost in October, but there is always a possibility. It's important to ensure that any tender plants such as Canna and Dahlia are lifted and moved to a frost free location such as a shed or greenhouse as soon as the frosts arrive – cut back any remaining flowers and foliage before doing so to make it easier – that way they should make it through to next year. Use pots filled with evergreen shrubs or winter annuals to fill any spaces left as a result. It's easy to keep tender plants in their own pots, which can then be sunk into the ground over summer & are then readily removable come winter. By keeping similar pots with different seasonal interest, the spot in the borders will always have something ready to fill it & will renew the interest for each coming season.

The arrival of Autumn often prompts the tidying up of the garden for winter by cutting back perennials that have finished their summer displays. Whilst this is good practice for maintaining a tidy space over winter, it is actually more beneficial to overwintering insects to leave some stems and flower heads for them so if you are able, consider leaving some parts of the garden less tidy as most plants are happy to be cut back in spring instead. However, don't miss the opportunity to collect seed heads, such as Snapdragons, Calendula, Lavender, Lychnis and Achillia, collect dry seeds in an envelope, & label it, ready to sow again next year.

Continued...

*continued ....*

October is the time to plant out spring bulbs: Crocus, Narcissi, Snowdrops and Anemones can all be planted out now. The fail-safe rule to follow is to plant them approx. three times the height of the bulb – so Narcissi will be a lot deeper than the Anemones – also scatter the bulbs on the ground in a random way, that way they will look far more natural when they flower.

In the veg garden, autumn is a time of great harvests, by now apples and pears should be reaching peak ripeness so make sure you pick what you can either to eat or store over winter. Only store perfect fruits as damaged ones are less likely to last very long. Other things that can still be harvested into October, so long as the weather allows, are French Beans, Salads, Carrots, Beetroot, Parsnips and of course Squashes and Pumpkins. Brussel Sprouts, Leeks, Kale and Winter Cabbages will also be coming into season, but all these can be left in the ground until they are needed and will be perfectly happy left over winter. Spring cabbages, Onions and Garlic can also be planted out now, as well as winter salads.

Other things to be doing in the garden now:

- \* Continue cutting the lawns whilst the weather is fine but avoid if it's wet or frosty.
- \* Keep watering, feeding & deadheading pots & baskets to extend their flowers for as long as possible. However if it's past its best then empty out the contents into the compost bin and replace with new seasonal plants.
- \* Clean out and top up bird baths and feeders ready for winter.
- \* Cover ponds with netting to prevent leaves from falling in & rotting in the water.
- \* Clean out guttering and water butts ready for maximum collection over winter.
- \* Collect up fallen leaves to create leafmould; it's a wonderful soil conditioner and is easy to make. Place the leaves into a black sack with some air holes punched into it. Squeeze as many in as you can as they will rot down. Tie the top and leave behind the shed for the next year, by which time they will have rotted down ready to be spread onto the soil.

*Sue Durrani, Allotment Association, Wouldham.*

01634 682363

# CLARKES FUNERAL SERVICE

(R.G. KINGSBURY M.M.S. Dip)

WE ARE AN INDEPENDENT FAMILY BUSINESS OFFERING  
A 24 HOUR, PERSONAL, CARING SERVICE.

---

ARRANGEMENTS CAN BE MADE AT OUR OFFICE  
OR IN THE COMFORT OF YOUR OWN HOME

---

- **PRE-PAID FUNERAL PLANS AVAILABLE**
- **PRIVATE CHAPEL OF REST**
- **MEMORIALS SUPPLIED** ● **ALL AREAS COVERED**



**31 High Street, Snodland Tel: 01634 240458**





**ANY TIME. ANYWHERE. ANY OCCASION.**

**AIRPORT TRANSFERS  
WEDDINGS, PARTIES & EVENTS  
CORPORATE EVENTS**

**HOLIDAYS**

**STUNNING SID-MOUTH**

Saturday 9<sup>th</sup> October  
**£419**  
4 Nights Half Board

**YORKSHIRE RAIL & SAIL**

Monday 25<sup>th</sup> October  
**£416**  
(Single Supplement: £73)  
4 Nights Half Board  
Multiple Excursions included

**ALL INCLUSIVE AT POTTERS RESORT**

Monday 1<sup>st</sup> November  
**£399**  
4 Nights All Inclusive

**SOMERSET FREE BAR BREAK**

Friday 5<sup>th</sup> November  
**£279**  
3 nights Half Board  
Free bar between 6-10pm each night

**EASTBOURNE TURKEY & TINSEL**

Friday 12<sup>th</sup> November  
**£254**  
3 Nights, Dinner Bed & Breakfast

**MANCHESTER CHRISTMAS MARKETS**

Friday 19<sup>th</sup> November  
**£199**  
2 Nights Bed & Breakfast  
**(COACH TRAVEL ONLY OPTION AVAILABLE)**

**BOURNEMOUTH TURKEY & TINSEL**

Monday 22<sup>nd</sup> November  
**£299**  
4 Nights Dinner Bred & Breakfast  
Excursion to Poole

**LONGLEAT LAND OF LIGHT**

Thursday 2<sup>nd</sup> December  
**£339**  
3 Nights Half Board  
(1 evening meal not included)

**TURKEY & TINSEL AT NIDDD HALL, WARNER RESORT**

Monday 13<sup>th</sup> December  
**£399**  
4 Nights Dinner, Bed & Breakfast

**OXFORD CHRISTMAS MARKET**

Saturday 18<sup>th</sup> December  
**£139**  
1 Night, Bed & Breakfast

**THURSFORD CHRISTMAS SPECTACULAR BREAKS**

**Thursday 11<sup>th</sup> November**  
2 nights  
**£259**

**Saturday 27<sup>th</sup> November**  
1 night  
**£199**

**Wednesday 8<sup>th</sup> December**  
1 night  
**£220**

**DAY EXCURSIONS**

**THE KNIT & STITCH SHOW**

Friday 8<sup>th</sup> October  
**£41**

**EMIRATES CABLE CAR & GREENWICH**

Saturday 9<sup>th</sup> October  
**£39**

**KEW GARDENS**

Wednesday 13<sup>th</sup> October  
**£45**

**ARUNDEL ON MARKET DAY**

Saturday 16<sup>th</sup> October  
**£31**

**MYSTERY TOUR & PUB LUNCH**

Wednesday 20<sup>th</sup> October  
**£41**

**RYE ON MARKET DAY**

Thursday 21<sup>st</sup> October  
**£29**

**WHIPSDNAE ZOO**

Tuesday 26<sup>th</sup> October  
**£55 Adult, £45 Child**

**HARRY POTTER WORLD**

Wednesday 27<sup>th</sup> October  
Adult **£75**, Child **£70**

**LEGOLAND**

Thursday 28<sup>th</sup> October  
**£55**

**PICK UPS:**

IN HOO, WAINSCOTT, STROOD, ROCHESTER, CHATHAM, GILLINGHAM, RAINHAM & HEMPSTEAD VALLEY

**ACCOMODATING BURHAM, WOULDHAM AND PETERS VILLAGE ON A REQUEST BASIS – PLEASE ENQUIRE**

**ALL TOURS & ITINERARIES CAN BE FOUND ON OUR WEBSITE:**

**[www.farleighcoaches.com](http://www.farleighcoaches.com)**

For more information, to book, or to request a free copy of our full excursions programme, please contact us:

CALL: **01634 254000** or  
EMAIL: **info@farleighcoaches.com**

Pop into our travel office on Vicarage Lane, Hoo, ME3 9LB.

**GOT AN UPCOMING JOURNEY OR EVENT?  
GET IN TOUCH TODAY FOR A FREE QUOTATION.**

**SCHOOL LANE  
BOARDING KENNELS & CATTERY**

*Authority licensed & inspected annually---*

*Local family run business*

*Long/ Short/Stays & special rates for extra long stays*

***SUPPORTED BY LOCAL VETS***

***01634 683149***

*Find us on Facebook*

***BARRY BLACK DOG TRAINING  
TELEPHONE HELP GIVEN @ REASONABLE  
RATES.***



***ALSO ONE 2 ONES- HOME VISITS or  
at ONE OF OUR GROUP CLASSES***

*Behaviour issues - puppies – obedience & agility classes*

*Professional Hands on Trainer*

*With over 36yrs experience.*

***KIND & UNDERSTANDING methods used***

***01634 669885***

*Find us on Facebook*

***BREEDERS OF QUALITY, GOOD NATURED, HEALTH  
CHECKED, LABRADORS & GERMAN SHORTHAIRED  
POINTERS***

***ALL PUPPIES ARE VET CHECKED & APPROVED.***

**CALL 01634 669885 for PUPPY AVAILABILITY**

*Find us on Facebook*



**BURHAM CHILDREN'S CENTRE**  
**Bell Lane, Burham. ME1 3SY**

**Due to the current situation with Covid-19  
please check online for updated support, advice and  
opening times.**

**Email: [tmcc@kent.gov.uk](mailto:tmcc@kent.gov.uk)**

**Tel No.: 03000 418008**

**or see our FACEBOOK PAGE**

**[www.kent.gov.uk/ccregistration](http://www.kent.gov.uk/ccregistration)**

**[www.facebook.com/Tonbridge-and-Malling-Childrens-Centres](http://www.facebook.com/Tonbridge-and-Malling-Childrens-Centres)**

---

**Burham Pre-School,  
Burham Village Hall**

Rated 'Good' by OFSTED

Spaces are filling up quickly so book now to  
avoid disappointment

Email: [Burham.pre-school@hotmail.com](mailto:Burham.pre-school@hotmail.com)

Visit: [burhampre-school@weebly.com](http://burhampre-school@weebly.com)

Contact Supervisor, Tracey Beechey, on  
Tel. No.: 07920 599287 or 07710 829954

**Sessions:**

Mon - Fri 9.15 - 11.45am

Mon - Fri 12.20 - 2.50pm

Mon - Fri. Lunch Club 11.45 - 12.20 pm

Optional 'early bird' drop off at 9am for £1.00

---

**JELLYBEANS PRE-SCHOOL, WOULDHAM VILLAGE HALL**

Our Ofsted Inspection found Jellybeans to be 'good'.

Sessions :

Mon - Fri morning: 9.15am - 11.45am

Mon - Thurs afternoons: 12.25pm - 2.55pm

Mon - Thurs Lunch Club: 11.45am - 12.25pm

Early drop off option available.

Feel free to visit at any time, no appointment necessary.

For further information please contact:

Mrs Donna Cook (Supervisor) on 07932551771

## **SHOPS**

**Frosts Service Station & Store**, Rochester Rd, Burham. 01634 861228

Opening times: Monday - Saturday: 7.00am - 9.00pm.

Sunday: 7.00am - 8.00pm

**The Vale Bakery**, 209 Rochester Rd, Burham

01634 861572

Opening times: Tuesday to Friday: 8:30am - 4:00pm.

Saturday: 8:30 am - 1:00pm

**The Watermans Arms Village Store, High Street, Wouldham**

Opening times: Every day

7:00am - 7:00pm

---

### **Church activities:**

#### **All Saints, Wouldham Church Choir.**

Choir practice is commencing on **Thursday, 24th June, 7.30pm**,

All Saints Church, Wouldham.

New junior and senior members are most welcome.

**Church Bell Ringing** All Saints Church, Wouldham.

Tina Miles Tel: 07967 795913. Currently suspended.

**Film Club** The Church in Burham, Church St. Currently suspended.

Contact Eileen Smith on: 01634867022

---

## **ADVERTISING IN THIS MAGAZINE**

|  |                |                  |                   |
|--|----------------|------------------|-------------------|
| <b>Size 1.</b> - 6cm x 6cm.<br>1/6 <sup>th</sup> of A5 page.                 | 1 issue<br>£10 | 5 issues<br>£45  | 10 issues<br>£80  |
| <b>Size 2.</b> –<br>12cm width x 6cm height.<br>1/3 <sup>rd</sup> of A5 page | 1 issue<br>£15 | 5 issues<br>£60  | 10 issues<br>£100 |
| <b>Size 3</b> –<br>12cm width x 12cm height<br>2/3 <sup>rd</sup> of A5 page. | 1 issue<br>£25 | 5 issues<br>£100 | 10 issues<br>£180 |
| <b>Full page.</b> A5<br>12cm width x 19cm height                             | 1 issue<br>£30 | 5 issues<br>£120 | 10 issues<br>£210 |

**ALL SAINTS CHURCH, WOULDHAM,  
WEATHERVANE APPEAL**



For 218 years the tower at All Saints Church in Wouldham has been surmounted by a fine iron weather vane.

Sadly after more than 200 years it is in need of urgent restoration. The church is seeking to raise £2500.00 to enable this to be undertaken by local craftsmen, which will involve:

- \* removing the weathervane and transportation
- \* restoring the iron work and the original gilding
- \* finally reinstating it atop the tower for another 200 years.

Please consider giving a donation towards preserving this beautiful iconic part of our village history. Thank you.

**£600 raised so far.**  
**Many thanks to those who have donated.**

You can donate by visiting:

**[www.https://www.justgiving.com/crowdfunding/  
weathervanewouldham](https://www.justgiving.com/crowdfunding/weathervanewouldham)**

Or, if you prefer, you can send a donation by cheque (*payable to Burham & Wouldham PCC Acc.*)

Send to: Mrs Heather Lloyd, 40 Downs View, Burham, ME1 3RR

I wish to donate £..... to the Weather Vane Appeal.

My name .....

Contact details .....



## Burham and Wouldham Women's Institute

September is traditionally a time for new starts and although Burham & Wouldham WI met in July for the annual Birthday meeting it was the meeting on the 7th of September that really heralded a new beginning.

Besides our usual valued members we had eleven visitors who were trying out the WI; some for the first time. They commented on the relaxed, happy, and friendly atmosphere and were impressed with our keenness to be involved in local issues. Always room for a few more so join us in at either or both of the two meetings in October on:

Tuesday the 5<sup>th</sup> and Tuesday the 19<sup>th</sup> at 7.30pm  
in Burham Village Hall.

On the 23<sup>rd</sup> of October the WI are providing refreshments at the War Memorial re-dedication event.

Not many people make biscuits nowadays so we have set up a special event where we will be teaching each other how to make tasty sweet and savoury biscuits.  
Ready Steady BAKE ...

Want to join us ?

Come along on the 3<sup>rd</sup> Tuesday in the month at 7.30pm in  
Burham Village Hall (Extra meetings on the first Tuesday in October).

Heather Brown



**BROADLEAF**  
TREE SURGERY

For your free quotation call

**0800 999 53 23**

**07429 903 594**



High quality & professional tree care.  
Fully qualified and insured with over  
14 years of experience.



- **Tree removal**
- **Deadwooding**
- **Crown reductions**
- **Crown thinning**
- **Hedge trimming**
- **Stump Grinding**

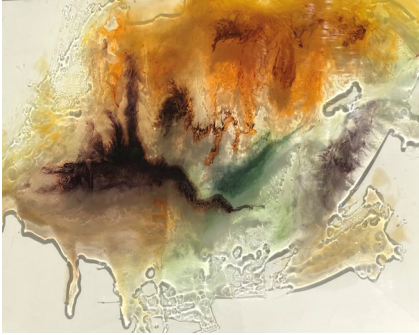
[info@broadleaftreesurgery.co.uk](mailto:info@broadleaftreesurgery.co.uk)



THE WAVE OF WINGS  
An exhibition by  
Marie Graesen-Gardner & Irene Godfrey at

ST MARY'S CHURCH, BURHAM on

Saturday 30<sup>th</sup> & Sunday 31<sup>st</sup> October 2021 between  
11am and 4 pm.



---

**Burham United Charities** are a local charitable organisation that provides assistance to those in need living within the old parish boundaries. (i.e. Burham Village and parts of Blue Bell Hill). Every year the Charity gives grants towards:

- \* The winter fuel costs of retired villagers on restricted incomes.
- \* Transport costs for any type of medical appointments including the Covid 19 vaccination.
- \* Alleviating particular instances of hardship for any resident of the parish.
- \* Helping with some of the costs associated with schooling.

If you, or someone you know, is on a low income or has an exceptional need which is not provided for by Welfare Benefits, we may be able to help. Contact: Dave Young (01634 867669) or Roger Kiralfy (01634 869900)



## Halls for hire:

### Wouldham Village Hall - Available for:

- \* Private functions/parties
- \* Regular bookings (for groups to meet or small businesses to hold classes)
- \* Meeting or training sessions

#### Costs:

- \* £11 per hour for private bookings, (minimum of 3 hours hire)
- \* £13 per hour for business bookings or
- \* A damage deposit of £50 is required when booking the hall.
- \* Deposit cheques will only be cashed if the hall is not left in good order to rubbish not taken away.



To book, Email: [wouldhamvillagehall.com](mailto:wouldhamvillagehall.com)

### Burham Village Hall:

A large modern hall located in the centre of the village next to the Village Recreation Ground with a large car park. It has many facilities including a large main room with floor area of 80m<sup>2</sup>, a kitchen, toilet facilities including disabled facilities and access. Two other smaller rooms are also available. Post Code ME1 3RJ.



#### Costs:

- \* £7 or £9 per hour for Monday to Friday 8:00am to 8:30pm
- \* £12 to £20 per hour for Weekends from Fridays at 8:30pm depending on the activity (Please see [Calendar - Burham Parish Council \(kentparishes.gov.uk\)](#) for full details)

### Burham Old School Community Centre:

Formerly the village infant school full of character with parking a short walk away in Bell Lane, the building has a large hall and a smaller hall, suitable for up to 16 people, with toilet facilities, including disabled access, and used for local clubs and charity events to name a few.



#### Costs:

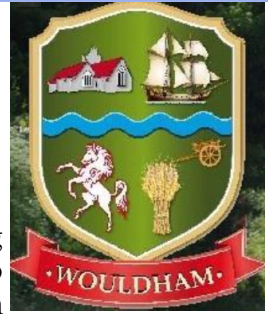
- \* £10 per hour week days and £12 per hour at weekends

To book, contact Thurza Browne on 01634 863322

## WOULDHAM PARISH COUNCIL

Our last meeting was on the 7th of September back in the Village Hall.

Our next one will be on Tuesday 5<sup>th</sup> October.



### Planning

There continues to be a lot of concern regarding building on the allotments. There are currently no planning applications submitted. The Parish Council have attempted to speak to Trenport to find out their intentions, but so far, have been unsuccessful. We will continue to watch and update on progress.

The Parish Council have again objected to the planning application for 206 High Street. Our response can be viewed on the TMBC website. Any resident can make comments on the application - Planning Reference: 21/02010/FL on the TMBC website.

### Waste

Whilst the Black, Green and Food bins are back to normal, there is still no end in sight to having the Brown Bin service resumed. But the PC has requested further concessions to the cost due to lack of service. It has been noted to the Borough Council that no service during the growing months has a greater impact than during the winter. Bulky waste is also low on the priority list to get back on track.

For information: Cuxton Recycling are able to take: *appliances (small and large), asbestos, batteries, cardboard, car batteries, clothes and fabrics, cooking oil, electrical items, engine oil (used), food and drink tins, fluorescent tubes, fridges and freezers, garden chemicals, garden waste, gas bottles, glass bottles and jars, hardcore (for example broken building materials), household batteries, household furniture, light bulbs, paper, plasterboard, printer cartridges, scrap metal, shoes, televisions, wood and timber. (restrictions apply).*

### Fly tipping

Fly tipping continues to be an issue, so it is important for everyone to report it whenever they come across it. You can report directly to: <https://www.tmbc.gov.uk/bins-waste/report-fly-tipping>.

*Continued ...*

*Continued ...*

### **The Henry Peters Charity**

This charity was set up by Henry Peters in his will around 1912 to be distributed to the sick and poor of Wouldham by the Parish Council. The trustees have agreed that the payments could be used to fund residents getting to and from the doctors' surgery or hospital. To apply please contact the Council clerk on 07904281522 or [clerk@wouldhampc.co.uk](mailto:clerk@wouldhampc.co.uk).

### **Crime**

There seems to be a gradual increase in crimes in the area. In order to get maximum support from local authorities', please ensure you report anything and get a crime reference number. Cllr Gray is setting up a Neighbourhood Watch Scheme for Wouldham Village and there is already one running in Peters Village led by Cllr Rimmington. Please get in touch if you are interested in joining.

### **Footpaths/Grounds Maintenance**

The PC are currently reviewing its Grounds Maintenance plan. If there is an area you think should be included, please let us know.

**WEBSITE** Can I remind you about our excellent website;

wouldhampc.com, on here you will find information on our meetings, about the Councillors, planning applications and notices. It is a great way to keep in touch.

Tina Miles

## **Wouldham Parish Council news October 2021**

Keep up to date with Parish Council business by  
Visiting:

Website: [wouldhampc.com](http://wouldhampc.com)

If you have any items that you would like the Parish Council to discuss, please get in touch by one of the following methods:

Contact: Tina Miles      Email: [clerk@wouldhampc.co.uk](mailto:clerk@wouldhampc.co.uk)  
Tel. No.: 07904281522

Chair: Eddy Bell      Email: [ebellwpc@gmail.com](mailto:ebellwpc@gmail.com)

**You can request to receive a printed copy of this free magazine delivered to you by sending your name, address & contact details to:**

WOULDHAM PC CLERK: 07904 281522  
or email [clerk@wouldhampc.co.uk](mailto:clerk@wouldhampc.co.uk)

BURHAM PC CLERK: 01634 685936  
or email [pam@burhampc.co.uk](mailto:pam@burhampc.co.uk)

**We are leaving some printed copies in the following places:**

| <b><u>BURHAM</u></b>   | <b><u>WOULDHAM</u></b>  |
|--|---|
| <b>Vale Bakery, Frosts, Parish<br/>Office, Methodist Church &amp;<br/>St Mary's Old Church</b> | <b>The Medway Inn,<br/>Watermans Arms &amp;<br/>All Saints Church</b> |

It can also be viewed online at any of the following:

[www.wouldhamchurch.org.uk](http://www.wouldhamchurch.org.uk)

[www.burhampc.kentparishes.gov.uk/](http://www.burhampc.kentparishes.gov.uk/)

### **The Community Magazine for Burham and Wouldham**

If you would like anything including in an edition please forward details to me by the **10<sup>th</sup> day of the previous month.**

Editor: Pamla Walker Tel. 07988 645801  
Email: [editorwbpvmagazine@gmail.com](mailto:editorwbpvmagazine@gmail.com)

*Please note; there are combined July/August & December/January editions.*

#### **A Note From The Editor**

We hope you enjoy reading this Magazine and welcome your news items and articles. However, we reserve the right to edit or not to publish.

The publication of any advertisement does not carry the Church's endorsement. Placing loose inserts into the Magazine is not permitted.

*Printed by Hadlum Print & Signs  
27-31 St Andrews Rd. Maidstone, ME16 9AN*